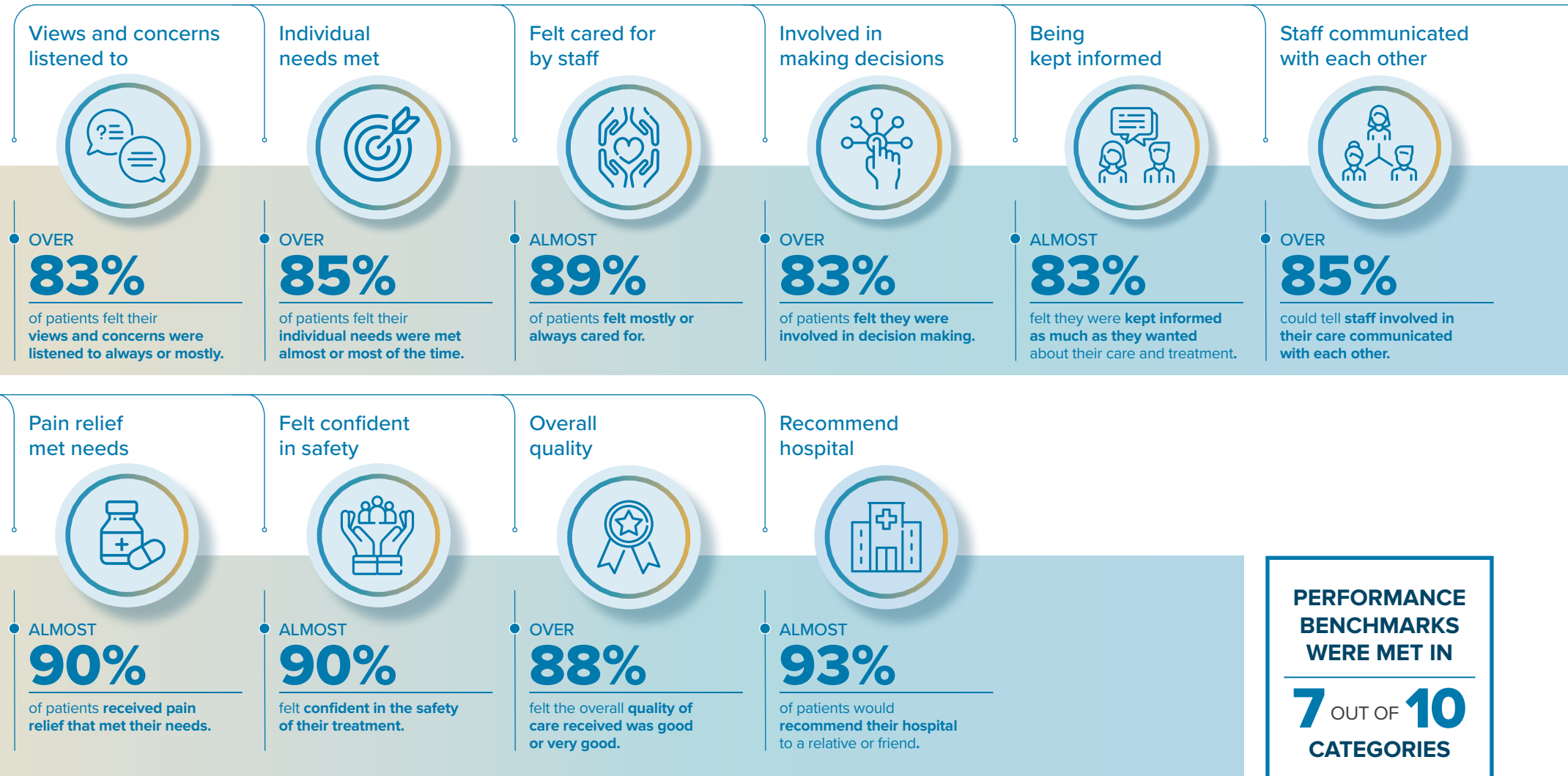


Measuring Consumer Experience 2022

In 2021, **4,236** South Australians were interviewed and their responses were analysed to measure hospital performance. Surveys were undertaken between January to December 2021.



Questions are based on the Australian Hospital Patient Experience Question Set. SA Health benchmark is 85%

Find out more by visiting: sahealth.sa.gov.au/myexperience



Government of South Australia
SA Health