

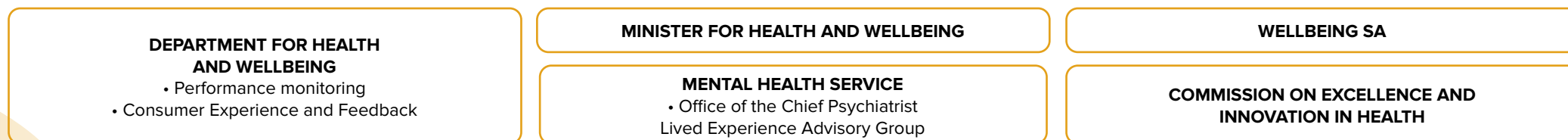
Consumer, Carer and Community Engagement Governance Model

– consumer, carer and community advisory groups

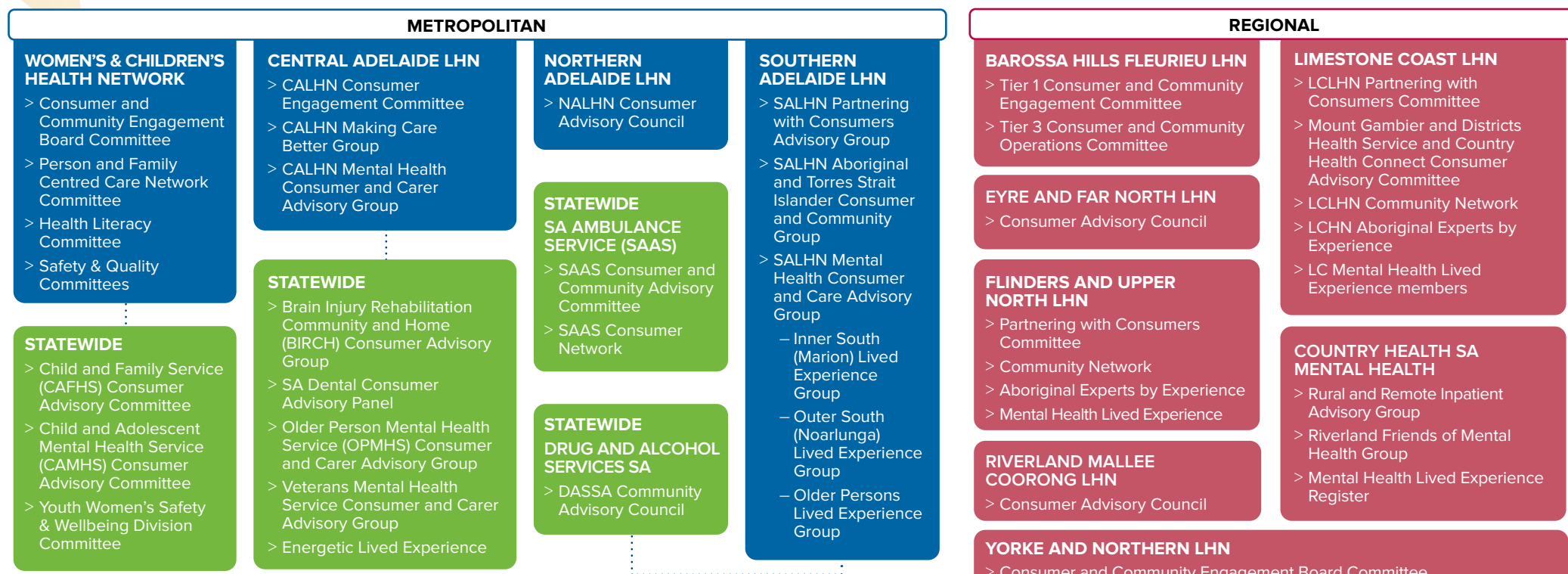


SA Health is committed to partnering with consumers, carers and the community in planning and delivery of health care services, and understands the important role they play in improving health care services.

The Consumer, Carer and Community Engagement Governance model outlines the consumer, carer and community advisory groups involved in service planning, designing care, measuring and evaluating health care services.



LOCAL HEALTH NETWORK GOVERNING BODY



For more information

SA Health
Safety and Quality Unit
 Telephone: (08) 8226 2567
sahealth.sa.gov.au/SafetyandQuality

OFFICIAL

