

Health in All Policies
Adelaide 2010, 12 to 15 April

South Australia's Health in All Policies Approach

Carmel Williams

Manager, Health in All Policies

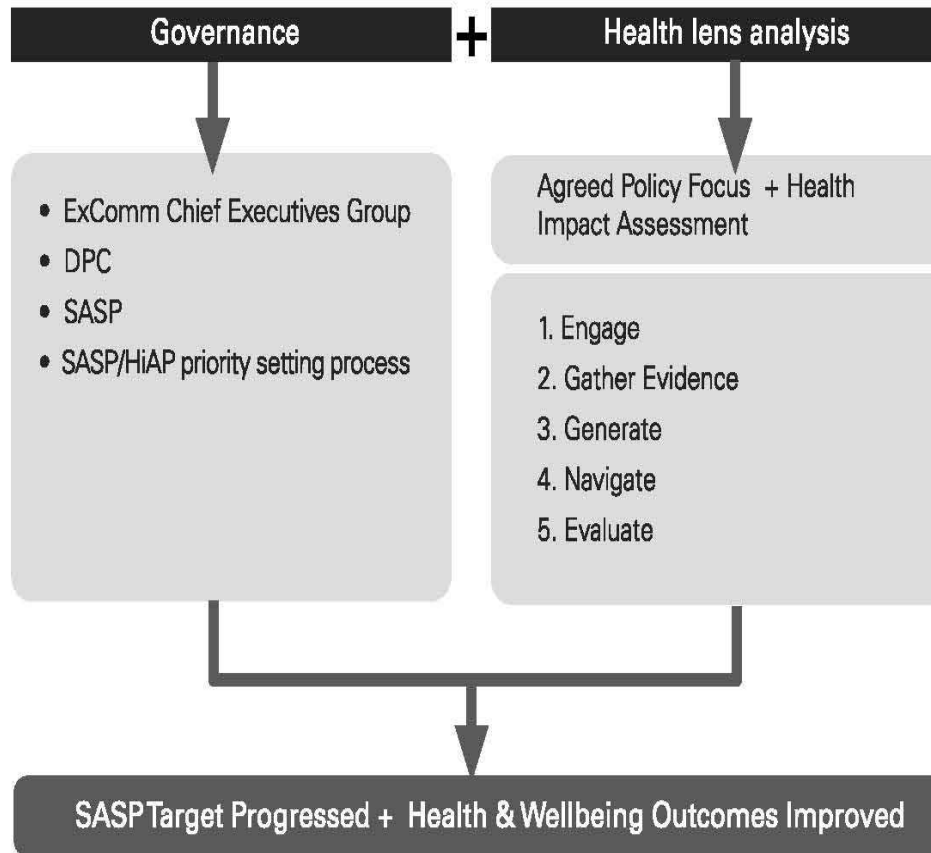
SA Health



Health in All Policies

Adelaide 2010, 12 to 15 April

SA Health in All Policies Model



HiAP Priority Setting Process

A priority setting process is undertaken in the third quarter of each calendar year.

Consultation occurs within:

- Department of Health
- Other Government Sectors
- The Department of the Premier and Cabinet
- Identified SASP targets presented to Executive Committee of Cabinet's Chief Executives Group for decision

The Health Lens Analysis process

Engage—establishing and maintaining strong collaborative relationships with other sectors.

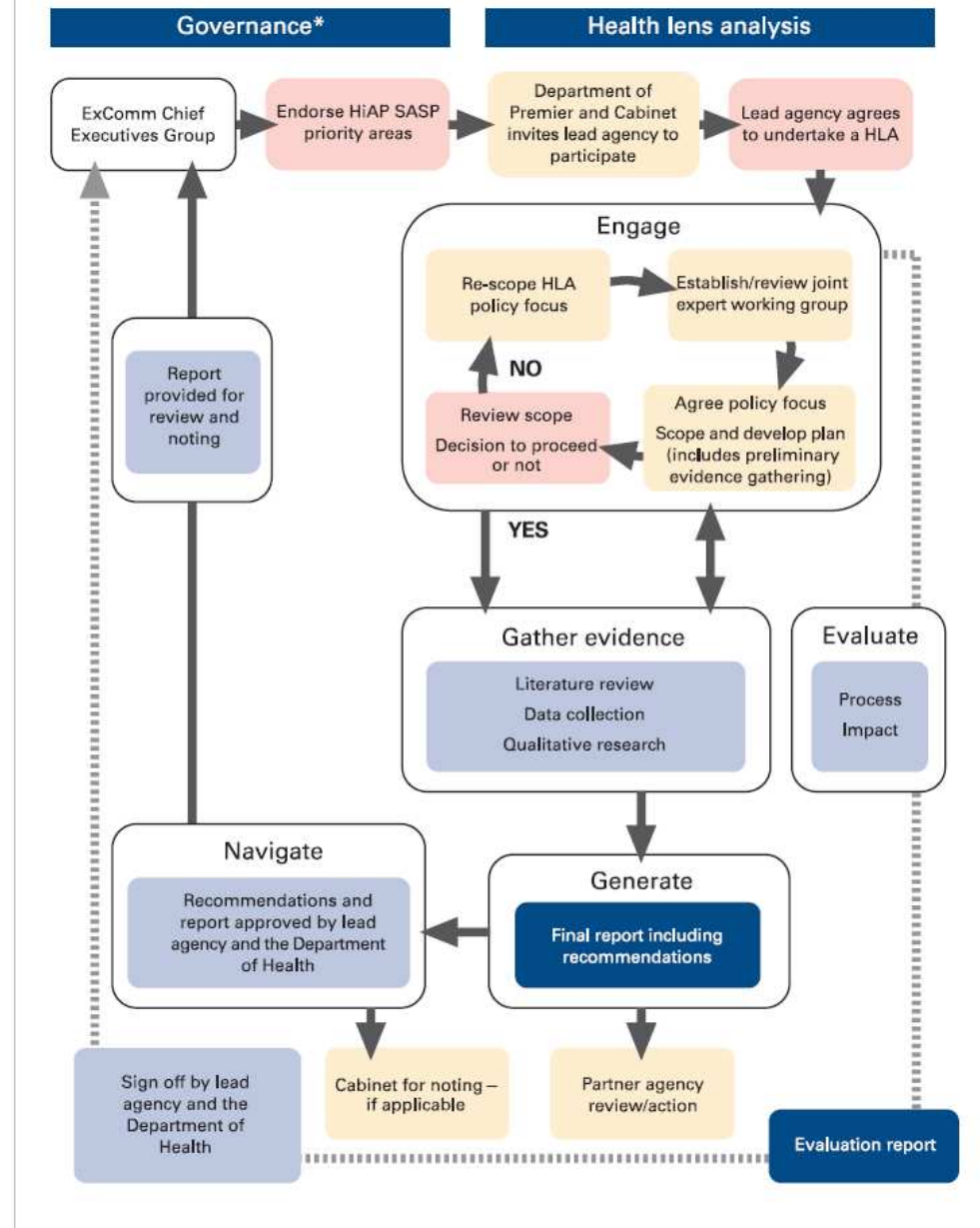
Gather evidence—establishing impacts between health and the policy area under focus, and identifying evidence-based solutions or policy options.

Generate—producing a set of policy recommendations and a final report.

Navigate—helping to steer the recommendations through the decision-making process.

Evaluate—determining the effectiveness of the HLA.

The South Australian Health Lens Analysis Process



Health Lens Projects- Completed

Water Sustainability

Office for Water Security

Regional Migrant Settlement

Department of Trade and Economic Development

Department of Health

Multicultural SA

Digital Technology

Department of Further Education, Employment Science and
Technology



World Health
Organization



Government
of South Australia

Health lens – In Progress

Transit Oriented Developments (TODs)

Department for Transport, Energy and Infrastructure
Department of Planning and Local Government
Land Management Corporation

Improving Parental Engagement to Increase Learner Literacy

Department of Education and Children's Services

Aboriginal Road Safety

SA Police
Department for Transport, Energy and Infrastructure
Attorney General's Department
Department of Correctional Services

Health lens – In Progress

Healthy Weight

Department of Health

Improving the Quality of Water Supplies in Remote Communities

Office for Water Security



Health in All Policies
Adelaide 2010, 12 to 15 April

Health lens – Under Development

**Regional Workforce Sustainability to Support Agricultural
and Mining Industries**

PIRSA

Overseas Students Health and Welfare

Education Adelaide



Future Issues and Challenges

- Language - that speaks to other sectors as well as health
- Clearly linking determinants to other sectors policy agenda
- Tackling health policy issues using HiAP framework
- Medium and long term impacts for health and other policy goals
- Capacity Building - adapting the approach to enable others to apply a health lens

Health in All Policies
Adelaide 2010, 12 to 15 April

Health in All Policies Unit



World Health
Organization



Government
of South Australia