

## Fact Sheet - Secure Messaging

# Finding Secure Message Clinical Documents in Genie

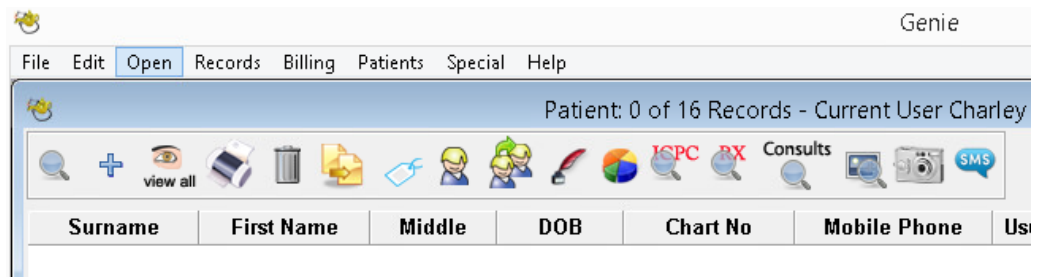
SA Health is providing more connected and seamless care with **Secure Messaging**.

### Can't locate the Clinical Documents?

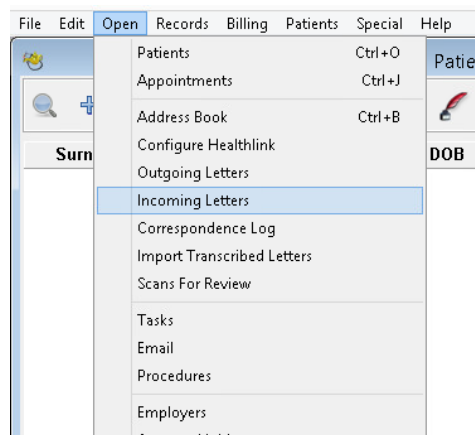
This guide will help you navigate to where the Clinical Documents distributed by Secure Messaging can be found in Genie.

### Genie – Practice Management System

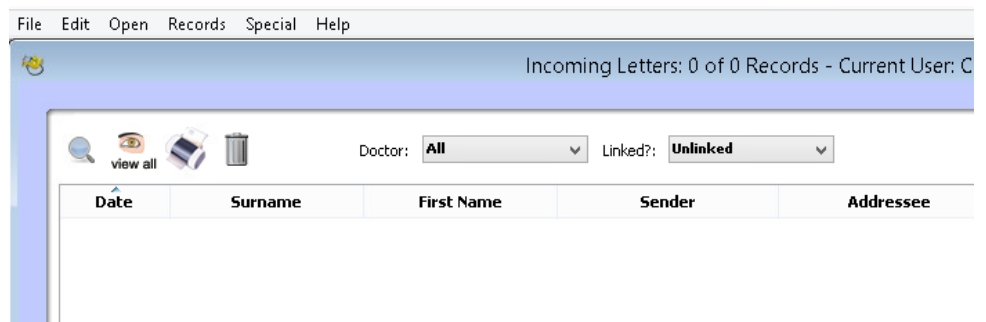
1. To view in coming letters, select **“Open”**



2. Select **“Incoming Letters”**



3. Change Doctor to **“All”** and Linked to **“Unlinked”**



4. Look for the patients name and double click on the report you wish to view



[www.ausgoal.gov.au/creative-commons](http://www.ausgoal.gov.au/creative-commons)

# Fact Sheet - Secure Messaging

## Still having trouble?

- Contact Genie on <https://geniesupport.geniesolutions.com.au/hc/en-us/>
- Your Primary Health Network can also provide general secure messaging support:
  - Adelaide PHN: [digitalhealthinfo@adelaidephn.com.au](mailto:digitalhealthinfo@adelaidephn.com.au)
  - Country PHN: [support@countrysaphn.com.au](mailto:support@countrysaphn.com.au)



[www.ausgoal.gov.au/creative-commons](http://www.ausgoal.gov.au/creative-commons)



Government  
of South Australia

SA Health