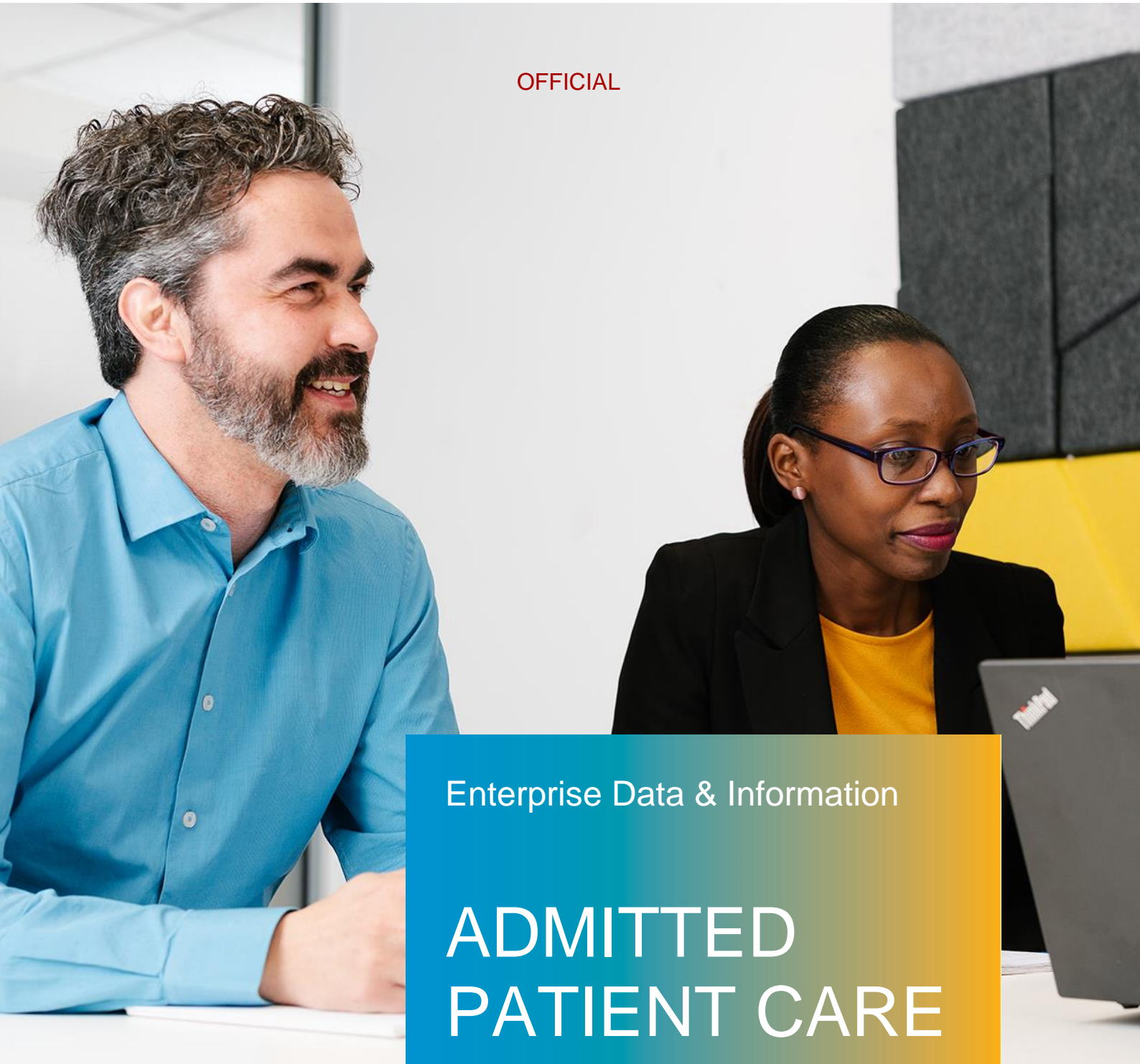


OFFICIAL



Enterprise Data & Information

ADMITTED PATIENT CARE

FILE EXTRACT

Technical Specification 2023-
2024

22nd June 2023



Government
of South Australia

SA Health

TABLE OF CONTENTS

Change History	3
Approvals	3
Document Endorsement.....	3
Introduction.....	4
Purpose	4
Scope.....	4
Related documents.....	4
Types of files	4
File Formats	5
Submission File	5
Correction File	50
Control Log	51
Supply of submission files.....	52
Document Control Information	53

CHANGE HISTORY

Document Version	Date	Updated By	Change Summary
1.0	6-Sep-2022	Mark Hall: Manager Information Assembly	Update for 1 July 2022
2.0	21-Dec-2022	Mark Hall: Senior Quality Assurance Officer	Updated to include Description and Obligation references

APPROVALS

This document is approved on the basis that it meeting the following acceptance criteria.

Document Endorsement

This document requires the following endorsement:

Version	Date	Name	Endorsed Yes/No?	Signature
1.0	6-Sep-2022	Anthony Fantasia A/Manager, Data Governance and Quality Assurance	Yes	AF
2.0	21-Dec-2022	Anthony Fantasia Manager, Data Governance and Quality Assurance	Yes	AF

INTRODUCTION

Purpose

This document has been specifically written to support the routine process of data supply for South Australian hospital to the state's morbidity collection known as the Admitted Patient Care data set managed by the Department for Health and Wellbeing.

The document describes the manual file submission process including file formats, deadlines and other specifications.

Scope

Sites that meet the scope of the Admitted Patient Care for South Australia will need this document to ensure an accurate manual submission file.

Sites that have an automated submission process to Admitted Patient Care (e.g. Sunrise EMR) will not find this document relevant.

Related documents

Readers of this document may also be interested in the associated documents:

- Admitted Patient Care – Data Elements – reference manual
- Admitted Patient Care – Data Quality Checks – reference manual
- Admitted Patient Care – Control Log

TYPES OF FILES

Two files are used to bring data from hospital Patient Administration Systems into the Admitted Patient Care data set:

- Submission file: used to provide new records
- Correction File: used to provide modified records

Both the submission and correction files are non-delimited text files.

In addition, every submission requires a Control Log: an Excel spreadsheet detailing the name and number of records to be loaded.

FILE FORMATS

Submission File

Files must be submitted in the 1917 fixed length format.

Character Position	Fieldname	Length	Type	Justification	Fill	Description	Obligation
1	[Record Type]	1	Numeric	Left	2		M
2-5	[Hospital Number]	4	Numeric	Right	zeros	The treating hospital, as represented by a unique code	M
6-15	[Patient Unit Reference Number]	10	Numeric	Right	zeros	The patient's Unit Record Number	M
16	[Sex]	1	Numeric	Left	zero	Identify if the patient has male or female sex characteristics	M
17	[Marital Status]	1	Numeric	Left	zero	The nature of the patient's relationship status	M
18-20	[Clinic Code]	3	Numeric	Right	zero	Identify the clinical unit under which the patient is admitted	O
21-28	[Admission Number]	8	Numeric	Right	zero	This is not a mandatory reporting data element. An admission number is used in conjunction with the patient's medical record number to group episodes for a single period of hospitalisation. Where utilised by hospitals, the admission number is unique for each hospitalisation	O
29-38	[Medicare Number]	10	Numeric	Right	space	The patient's Medicare number	M
39	[Medicare IRN]	1	Numeric	Right	space	The patient's Medicare number Individual Reference Number	M
40-43	[Statistical Local Area]	4	Numeric	Right	zero	The Statistical Local Area of the patient's home address	M
44-63	[Suburb / Locality] (send as blank; use position 1828 to 1877 to send 50-character length field)	20	Alpha	Left	space		M
64-67	[Postcode]	4	Numeric	Right	zero	The postcode of the patient's home address	M

OFFICIAL

68-71	[Country Of Birth]	4	Numeric	Right	zero	The country in which the patient was born, as represented by a code	M
72	[Indigenous Status]	1	Numeric	Left	zero	Whether a person identifies as being Aboriginal or Torres Strait Islander origin, as represented by a code	M
73-80	[Date Of Birth]	8	Numeric	Right	zero	The date of birth of the patient, expressed as DDMMYYYY	M
81	[Patient Category]	1	Numeric	Left	zero	The patient admission intention to stay for same day or overnight	M
82	[Source Of Referral]	1	Alpha/Numeric	Left	space	Source of the patient referral	M
83-90	[Admission Date]	8	Numeric	Right	zero	The date on which an admitted patient commences an episode of care, expressed as DDMMYYYY	M
91	[Admission Election]	1	Numeric	Left	zero	Accommodation chargeable status elected by a patient on admission, as represented by a code	M
92	[Admission Type]	1	Numeric	Left	zero	Whether the admission has an urgency status assigned and, if so, whether admission occurred on an emergency basis, as represented by a code	M
93-100	[Status Change Date] (1)	8	Numeric	Right	zero	The effective date from when patient changed their [Admission Election] or [Admission Type]	C
101	[Status Change Election] (1)	1	Numeric	Left	zero	The change to the patient's [Admission Election]	C
102	[Status Change Type] (1)	1	Numeric	Left	zero	The date the patient changed their [Admission Type]	C
103-110	[Status Change Date] (2)	8	Numeric	Right	zero	The effective date from when patient changed their [Admission Election] or [Admission Type]	C
111	[Status Change Election] (2)	1	Numeric	Left	zero	The change to the patient's [Admission Election]	C
112	[Status Change Type] (2)	1	Numeric	Left	zero	The date the patient changed their [Admission Type]	C
113-120	[Status Change Date] (3)	8	Numeric	Right	zero	The effective date from when patient changed their [Admission Election] or [Admission Type]	C
121	[Status Change Election] (3)	1	Numeric	Left	zero	The change to the patient's [Admission Election]	C

OFFICIAL

122	[Status Change Type] (3)	1	Numeric	Left	zero	The date the patient changed their [Admission Type]	C
123	[Veteran Card Type]	1	Alpha	Left	space	The patient's Department of Veteran Affairs card type	C
124-132	[Veteran Card Number]	9	Alpha/Numeric	Left	space	The patient's Department of Veteran Affairs card number	C
133	[Hospital Insurance]	1	Numeric	Left	zero	The insurance status of the patient, as represented by a code	M
134-141	[Separation Date]	8	Numeric	Right	zero	The date the episode of care ended	M
142-143	[Referral For Further Health Care]	2	Numeric	Right	zero	The patient referral for further health care	M
144	[Nature Of Separation]	1	Alpha/Numeric	Left	space	Nature of the patient's discharge	M
145-148	[Hospital Transferred To]	4	Numeric	Right	zero	The hospital to which the patient was transferred, as represented by a code	C
149-153	[Principal Diagnosis]	5	Alpha/Numeric	Left	space	The main diagnosis made for the patient	M
154	[Condition Onset Flag] for [Principal Diagnosis]	1	Numeric	Left	space	A qualifier for each coded diagnosis to indicate the onset of the condition relative to the beginning of the admitted patient episode of care, as represented by a code	M
155-159	[Additional Diagnosis] (001)	5	Alpha/Numeric	Left	space	A condition or complaint either coexisting with the principal diagnosis or arising during the episode of admitted patient care, episode of residential care or attendance at a health-care establishment, as represented by a code	O
160	[Condition Onset Flag] for [Additional Diagnosis] (001)	1	Numeric	Left	space	A qualifier for each coded diagnosis to indicate the onset of the condition relative to the beginning of the admitted patient episode of care, as represented by a code	C
161-165	[Additional Diagnosis] (002)	5	Alpha/Numeric	Left	space	A condition or complaint either coexisting with the principal diagnosis or arising during the episode of admitted patient care, episode of residential care or attendance at a health-care establishment, as represented by a code	O
166	[Condition Onset Flag] for [Additional Diagnosis] (002)	1	Numeric	Left	space		C

OFFICIAL

167-171	[Additional Diagnosis] (003)	5	Alpha/Numeric	Left	space	A condition or complaint either coexisting with the principal diagnosis or arising during the episode of admitted patient care, episode of residential care or attendance at a health-care establishment, as represented by a code	O
172	[Condition Onset Flag] for [Additional Diagnosis] (003)	1	Numeric	Left	space	A qualifier for each coded diagnosis to indicate the onset of the condition relative to the beginning of the admitted patient episode of care, as represented by a code	C
173-177	[Additional Diagnosis] (004)	5	Alpha/Numeric	Left	space	A condition or complaint either coexisting with the principal diagnosis or arising during the episode of admitted patient care, episode of residential care or attendance at a health-care establishment, as represented by a code	O
178	[Condition Onset Flag] for [Additional Diagnosis] (004)	1	Numeric	Left	space	A qualifier for each coded diagnosis to indicate the onset of the condition relative to the beginning of the admitted patient episode of care, as represented by a code	C
179-183	[Additional Diagnosis] (005)	5	Alpha/Numeric	Left	space	A condition or complaint either coexisting with the principal diagnosis or arising during the episode of admitted patient care, episode of residential care or attendance at a health-care establishment, as represented by a code	O
184	[Condition Onset Flag] for [Additional Diagnosis] (005)	1	Numeric	Left	space	A qualifier for each coded diagnosis to indicate the onset of the condition relative to the beginning of the admitted patient episode of care, as represented by a code	C
185-189	[Additional Diagnosis] (006)	5	Alpha/Numeric	Left	space	A condition or complaint either coexisting with the principal diagnosis or arising during the episode of admitted patient care, episode of residential care or attendance at a health-care establishment, as represented by a code	O
190	[Condition Onset Flag] for [Additional Diagnosis] (006)	1	Numeric	Left	space	A qualifier for each coded diagnosis to indicate the onset of the condition relative to the beginning of the admitted patient episode of care, as represented by a code	C
191-195	[Additional Diagnosis] (007)	5	Alpha/Numeric	Left	space	A condition or complaint either coexisting with the principal diagnosis or arising during the	O

OFFICIAL

						episode of admitted patient care, episode of residential care or attendance at a health-care establishment, as represented by a code	
196	[Condition Onset Flag] for [Additional Diagnosis] (007)	1	Numeric	Left	space	A qualifier for each coded diagnosis to indicate the onset of the condition relative to the beginning of the admitted patient episode of care, as represented by a code	C
197-201	[Additional Diagnosis] (008)	5	Alpha/Numeric	Left	space	A condition or complaint either coexisting with the principal diagnosis or arising during the episode of admitted patient care, episode of residential care or attendance at a health-care establishment, as represented by a code	O
202	[Condition Onset Flag] for [Additional Diagnosis] (008)	1	Numeric	Left	space	A qualifier for each coded diagnosis to indicate the onset of the condition relative to the beginning of the admitted patient episode of care, as represented by a code	C
203-207	[Additional Diagnosis] (009)	5	Alpha/Numeric	Left	space	A condition or complaint either coexisting with the principal diagnosis or arising during the episode of admitted patient care, episode of residential care or attendance at a health-care establishment, as represented by a code	O
208	[Condition Onset Flag] for [Additional Diagnosis] (009)	1	Numeric	Left	space	A qualifier for each coded diagnosis to indicate the onset of the condition relative to the beginning of the admitted patient episode of care, as represented by a code	C
209-213	[Additional Diagnosis] (010)	5	Alpha/Numeric	Left	space	A condition or complaint either coexisting with the principal diagnosis or arising during the episode of admitted patient care, episode of residential care or attendance at a health-care establishment, as represented by a code	O
214	[Condition Onset Flag] for [Additional Diagnosis] (010)	1	Numeric	Left	space	A qualifier for each coded diagnosis to indicate the onset of the condition relative to the beginning of the admitted patient episode of care, as represented by a code	C
215-219	[Additional Diagnosis] (011)	5	Alpha/Numeric	Left	space	A condition or complaint either coexisting with the principal diagnosis or arising during the episode of admitted patient care, episode of residential care or attendance at a health-care	O

OFFICIAL

						establishment, as represented by a code	
220	[Condition Onset Flag] for [Additional Diagnosis] (011)	1	Numeric	Left	space	A qualifier for each coded diagnosis to indicate the onset of the condition relative to the beginning of the admitted patient episode of care, as represented by a code	C
221-225	[Additional Diagnosis] (012)	5	Alpha/Numeric	Left	space	A condition or complaint either coexisting with the principal diagnosis or arising during the episode of admitted patient care, episode of residential care or attendance at a health-care establishment, as represented by a code	O
226	[Condition Onset Flag] for [Additional Diagnosis] (012)	1	Numeric	Left	space	A qualifier for each coded diagnosis to indicate the onset of the condition relative to the beginning of the admitted patient episode of care, as represented by a code	C
227-231	[Additional Diagnosis] (013)	5	Alpha/Numeric	Left	space	A condition or complaint either coexisting with the principal diagnosis or arising during the episode of admitted patient care, episode of residential care or attendance at a health-care establishment, as represented by a code	O
232	[Condition Onset Flag] for [Additional Diagnosis] (013)	1	Numeric	Left	space	A qualifier for each coded diagnosis to indicate the onset of the condition relative to the beginning of the admitted patient episode of care, as represented by a code	C
233-237	[Additional Diagnosis] (014)	5	Alpha/Numeric	Left	space	A condition or complaint either coexisting with the principal diagnosis or arising during the episode of admitted patient care, episode of residential care or attendance at a health-care establishment, as represented by a code	O
238	[Condition Onset Flag] for [Additional Diagnosis] (014)	1	Numeric	Left	space	A qualifier for each coded diagnosis to indicate the onset of the condition relative to the beginning of the admitted patient episode of care, as represented by a code	C
239-243	[Additional Diagnosis] (015)	5	Alpha/Numeric	Left	space	A condition or complaint either coexisting with the principal diagnosis or arising during the episode of admitted patient care, episode of residential care or attendance at a health-care establishment, as represented by a code	O

OFFICIAL

244	[Condition Onset Flag] for [Additional Diagnosis] (015)	1	Numeric	Left	space	A qualifier for each coded diagnosis to indicate the onset of the condition relative to the beginning of the admitted patient episode of care, as represented by a code	C
245-249	[Additional Diagnosis] (016)	5	Alpha/Numeric	Left	space	A condition or complaint either coexisting with the principal diagnosis or arising during the episode of admitted patient care, episode of residential care or attendance at a health-care establishment, as represented by a code	O
250	[Condition Onset Flag] for [Additional Diagnosis] (016)	1	Numeric	Left	space	A qualifier for each coded diagnosis to indicate the onset of the condition relative to the beginning of the admitted patient episode of care, as represented by a code	C
251-255	[Additional Diagnosis] (017)	5	Alpha/Numeric	Left	space	A condition or complaint either coexisting with the principal diagnosis or arising during the episode of admitted patient care, episode of residential care or attendance at a health-care establishment, as represented by a code	O
256	[Condition Onset Flag] for [Additional Diagnosis] (017)	1	Numeric	Left	space	A qualifier for each coded diagnosis to indicate the onset of the condition relative to the beginning of the admitted patient episode of care, as represented by a code	C
257-261	[Additional Diagnosis] (018)	5	Alpha/Numeric	Left	space	A condition or complaint either coexisting with the principal diagnosis or arising during the episode of admitted patient care, episode of residential care or attendance at a health-care establishment, as represented by a code	O
262	[Condition Onset Flag] for [Additional Diagnosis] (018)	1	Numeric	Left	space	A qualifier for each coded diagnosis to indicate the onset of the condition relative to the beginning of the admitted patient episode of care, as represented by a code	C
263-267	[Additional Diagnosis] (019)	5	Alpha/Numeric	Left	space	A condition or complaint either coexisting with the principal diagnosis or arising during the episode of admitted patient care, episode of residential care or attendance at a health-care establishment, as represented by a code	O
268	[Condition Onset Flag] for [Additional Diagnosis] (019)	1	Numeric	Left	space	A qualifier for each coded diagnosis to indicate the onset of the condition relative to the	C

OFFICIAL

						beginning of the admitted patient episode of care, as represented by a code	
269-273	[Additional Diagnosis] (020)	5	Alpha/Numeric	Left	space	A condition or complaint either coexisting with the principal diagnosis or arising during the episode of admitted patient care, episode of residential care or attendance at a health-care establishment, as represented by a code	O
274	[Condition Onset Flag] for [Additional Diagnosis] (020)	1	Numeric	Left	space	A qualifier for each coded diagnosis to indicate the onset of the condition relative to the beginning of the admitted patient episode of care, as represented by a code	C
275-279	[Additional Diagnosis] (021)	5	Alpha/Numeric	Left	space	A condition or complaint either coexisting with the principal diagnosis or arising during the episode of admitted patient care, episode of residential care or attendance at a health-care establishment, as represented by a code	O
280	[Condition Onset Flag] for [Additional Diagnosis] (021)	1	Numeric	Left	space	A qualifier for each coded diagnosis to indicate the onset of the condition relative to the beginning of the admitted patient episode of care, as represented by a code	C
281-285	[Additional Diagnosis] (022)	5	Alpha/Numeric	Left	space	A condition or complaint either coexisting with the principal diagnosis or arising during the episode of admitted patient care, episode of residential care or attendance at a health-care establishment, as represented by a code	O
286	[Condition Onset Flag] for [Additional Diagnosis] (022)	1	Numeric	Left	space	A qualifier for each coded diagnosis to indicate the onset of the condition relative to the beginning of the admitted patient episode of care, as represented by a code	C
287-291	[Additional Diagnosis] (023)	5	Alpha/Numeric	Left	space	A condition or complaint either coexisting with the principal diagnosis or arising during the episode of admitted patient care, episode of residential care or attendance at a health-care establishment, as represented by a code	O
292	[Condition Onset Flag] for [Additional Diagnosis] (023)	1	Numeric	Left	space	A qualifier for each coded diagnosis to indicate the onset of the condition relative to the beginning of the admitted patient episode of care, as represented by a code	C

OFFICIAL

293-297	[Additional Diagnosis] (024)	5	Alpha/Numeric	Left	space	A condition or complaint either coexisting with the principal diagnosis or arising during the episode of admitted patient care, episode of residential care or attendance at a health-care establishment, as represented by a code	O
298	[Condition Onset Flag] for [Additional Diagnosis] (024)	1	Numeric	Left	space	A qualifier for each coded diagnosis to indicate the onset of the condition relative to the beginning of the admitted patient episode of care, as represented by a code	C
299-305	[Principal Procedure]	7	Alpha/Numeric	Left	space	Type of procedure performed on the patient	M
306	[Procedure Location Indicator] for [Principal Procedure]	1	Alpha/Numeric	Left	space	The hospital where the procedure was performed	M
307-313	[Procedure] (001)	7	Alpha/Numeric	Left	space	Type of procedure performed on the patient	M
314	[Procedure Location Indicator] for [Procedure] (001)	1	Alpha/Numeric	Left	space	The hospital where the procedure was performed	C
315-321	[Procedure] (002)	7	Alpha/Numeric	Left	space	Type of procedure performed on the patient	M
322	[Procedure Location Indicator] for [Procedure] (002)	1	Alpha/Numeric	Left	space	The hospital where the procedure was performed	C
323-329	[Procedure] (003)	7	Alpha/Numeric	Left	space	Type of procedure performed on the patient	M
330	[Procedure Location Indicator] for [Procedure] (003)	1	Alpha/Numeric	Left	space	The hospital where the procedure was performed	C
331-337	[Procedure] (004)	7	Alpha/Numeric	Left	space	Type of procedure performed on the patient	M
338	[Procedure Location Indicator] for [Procedure] (004)	1	Alpha/Numeric	Left	space	The hospital where the procedure was performed	C
339-345	[Procedure] (005)	7	Alpha/Numeric	Left	space	Type of procedure performed on the patient	M

OFFICIAL

346	[Procedure Location Indicator] for [Procedure] (005)	1	Alpha/Numeric	Left	space	The hospital where the procedure was performed	C
347-353	[Procedure] (006)	7	Alpha/Numeric	Left	space	Type of procedure performed on the patient	M
354	[Procedure Location Indicator] for [Procedure] (006)	1	Alpha/Numeric	Left	space	The hospital where the procedure was performed	C
355-361	[Procedure] (007)	7	Alpha/Numeric	Left	space	Type of procedure performed on the patient	M
362	[Procedure Location Indicator] for [Procedure] (007)	1	Alpha/Numeric	Left	space	The hospital where the procedure was performed	C
363-369	[Procedure] (008)	7	Alpha/Numeric	Left	space	Type of procedure performed on the patient	M
370	[Procedure Location Indicator] for [Procedure] (008)	1	Alpha/Numeric	Left	space	The hospital where the procedure was performed	C
371-377	[Procedure] (009)	7	Alpha/Numeric	Left	space	Type of procedure performed on the patient	M
378	[Procedure Location Indicator] for [Procedure] (009)	1	Alpha/Numeric	Left	space	The hospital where the procedure was performed	C
379-385	[Procedure] (010)	7	Alpha/Numeric	Left	space	Type of procedure performed on the patient	M
386	[Procedure Location Indicator] for [Procedure] (010)	1	Alpha/Numeric	Left	space	The hospital where the procedure was performed	C
387-393	[Procedure] (011)	7	Alpha/Numeric	Left	space	Type of procedure performed on the patient	M
394	[Procedure Location Indicator] for [Procedure] (011)	1	Alpha/Numeric	Left	space	The hospital where the procedure was performed	C
395-401	[Procedure] (012)	7	Alpha/Numeric	Left	space	Type of procedure performed on the patient	M
402	[Procedure Location Indicator] for [Procedure] (012)	1	Alpha/Numeric	Left	space	The hospital where the procedure was performed	C

OFFICIAL

403-409	[Procedure] (013)	7	Alpha/Numeric	Left	space	Type of procedure performed on the patient	M
410	[Procedure Location Indicator] for [Procedure] (013)	1	Alpha/Numeric	Left	space	The hospital where the procedure was performed	C
411-417	[Procedure] (014)	7	Alpha/Numeric	Left	space	Type of procedure performed on the patient	M
418	[Procedure Location Indicator] for [Procedure] (014)	1	Alpha/Numeric	Left	space	The hospital where the procedure was performed	C
419-425	[Procedure] (015)	7	Alpha/Numeric	Left	space	Type of procedure performed on the patient	M
426	[Procedure Location Indicator] for [Procedure] (015)	1	Alpha/Numeric	Left	space	The hospital where the procedure was performed	C
427-433	[Procedure] (016)	7	Alpha/Numeric	Left	space	Type of procedure performed on the patient	M
434	[Procedure Location Indicator] for [Procedure] (016)	1	Alpha/Numeric	Left	space	The hospital where the procedure was performed	C
435-441	[Procedure] (017)	7	Alpha/Numeric	Left	space	Type of procedure performed on the patient	M
442	[Procedure Location Indicator] for [Procedure] (017)	1	Alpha/Numeric	Left	space	The hospital where the procedure was performed	C
443-449	[Procedure] (018)	7	Alpha/Numeric	Left	space	Type of procedure performed on the patient	M
450	[Procedure Location Indicator] for [Procedure] (018)	1	Alpha/Numeric	Left	space	The hospital where the procedure was performed	C
451-457	[Procedure] (019)	7	Alpha/Numeric	Left	space	Type of procedure performed on the patient	M
458	[Procedure Location Indicator] for [Procedure] (019)	1	Alpha/Numeric	Left	space	The hospital where the procedure was performed	C
459-465	[Procedure] (020)	7	Alpha/Numeric	Left	space	Type of procedure performed on the patient	M

OFFICIAL

466	[Procedure Location Indicator] for [Procedure] (020)	1	Alpha/Numeric	Left	space	The hospital where the procedure was performed	C
467-473	[Procedure] (021)	7	Alpha/Numeric	Left	space	Type of procedure performed on the patient	M
474	[Procedure Location Indicator] for [Procedure] (021)	1	Alpha/Numeric	Left	space	The hospital where the procedure was performed	C
475-481	[Procedure] (022)	7	Alpha/Numeric	Left	space	Type of procedure performed on the patient	M
482	[Procedure Location Indicator] for [Procedure] (022)	1	Alpha/Numeric	Left	space	The hospital where the procedure was performed	C
483-489	[Procedure] (023)	7	Alpha/Numeric	Left	space	Type of procedure performed on the patient	M
490	[Procedure Location Indicator] for [Procedure] (023)	1	Alpha/Numeric	Left	space	The hospital where the procedure was performed	C
491-497	[Procedure] (024)	7	Alpha/Numeric	Left	space	Type of procedure performed on the patient	M
498	[Procedure Location Indicator] for [Procedure] (024)	1	Alpha/Numeric	Left	space	The hospital where the procedure was performed	C
499-505	[Procedure] (025)	7	Alpha/Numeric	Left	space	Type of procedure performed on the patient	M
506	[Procedure Location Indicator] for [Procedure] (025)	1	Alpha/Numeric	Left	space	The hospital where the procedure was performed	C
507-511	[External Cause]	5	Alpha/Numeric	Left	space	The environmental event, circumstance or condition as the cause of injury, as represented by a code	C
512-516	[Place Of Occurrence]	5	Alpha/Numeric	Left	space	Place on the body where the patient's injury was located	C
517-521	[Activity When Injured]	5	Alpha/Numeric	Left	space	The type of activity being undertaken by the person when injured, as represented by a code	C
522	[Episode Of Care]	1	Alpha/Numeric	Left	zero	The overall nature of a clinical service provided to an admitted patient during an episode of care (admitted care) or the type of service	M

OFFICIAL

						provided by the hospital for posthumous organ procurement (care other than admitted care), as represented by a code	
523-524	[Funding Source]	2	Numeric	Left	zero	The source of funds for an admitted patient episode, as represented by a code. The major funding source should be recorded if there is more than one source of funding	M
525	[Unplanned Readmission]	1	Numeric	Left	space		M
526	[Admission Category]	1	Numeric	Left	zero	Whether the admission has an urgency status assigned and, if so, whether admission occurred on an emergency basis, as represented by a code	M
527-536	[Contracted Service Patient Unit Record Number]	10	Numeric	Right	zero	The patient unit record number of the hospital providing the contracted service	C
537-544	[Contracted Service Admission Date]	8	Numeric	Right	zero	The date the period of contracted care commenced	C
545-548	[Contracted Service Hospital Number]	4	Numeric	Right	zero	The hospital code of the originating hospital or the destination hospital providing the contracted service	C
549-556	[Leave From Date] (1)	8	Numeric	Right	zero	Date the patient went on leave	C
557-560	[Leave From Time] (1)	4	Numeric	Right	zero	Time the patient went on leave	C
561-568	[Leave To Date] (1)	8	Numeric	Right	zero	Date the patient returned from leave	C
569-572	[Leave To Time] (1)	4	Numeric	Right	zero	Time the patient returned from leave	C
573-580	[Leave From Date] (2)	8	Numeric	Right	zero	Date the patient went on leave	C
581-584	[Leave From Time] (2)	4	Numeric	Right	zero	Time the patient went on leave	C

OFFICIAL

585-592	[Leave To Date] (2)	8	Numeric	Right	zero	Date the patient returned from leave	C
593-596	[Leave To Time] (2)	4	Numeric	Right	zero	Time the patient returned from leave	C
597-604	[Leave From Date] (3)	8	Numeric	Right	zero	Date the patient went on leave	C
605-608	[Leave From Time] (3)	4	Numeric	Right	zero	Time the patient went on leave	C
609-616	[Leave To Date] (3)	8	Numeric	Right	zero	Date the patient returned from leave	C
617-620	[Leave To Time] (3)	4	Numeric	Right	zero	Time the patient returned from leave	C
621-628	[Leave From Date] (4)	8	Numeric	Right	zero	Date the patient went on leave	C
629-632	[Leave From Time] (4)	4	Numeric	Right	zero	Time the patient went on leave	C
633-640	[Leave To Date] (4)	8	Numeric	Right	zero	Date the patient returned from leave	C
641-644	[Leave To Time] (4)	4	Numeric	Right	zero	Time the patient returned from leave	C
645-648	[Admission Weight]	4	Numeric	Right	zero	Record the neonates' weight in grams	C
649-653	[Hours In ICU]	5	Numeric	Right	zero	The total number of hours an admitted patient has spent in a designated intensive care bed during an episode of care in a hospital, rounded to the nearest hour. Includes paediatric intensive care beds	C
654-657	[Hours On Mechanical Ventilation] (send as blank; use position 1878 to 1882 to send 5-character length field)	4	Numeric	Right	zero		C
658	[Legal Status]	1	Numeric	Left	zero	Identify the patient's legal status when admitted	M

OFFICIAL

659-662	[Admission Time]	4	Numeric	Right	zero	The time at which an admitted patient commences an episode of care	M
663-666	[Separation Time]	4	Numeric	Right	zero	The time the episode of care ended	M
667-670	[Hospital Transferred From]	4	Numeric	Right	zero	The hospital from which the patient was transferred, as represented by a code	C
671-680	[Mental Health Linking Number]	10	Numeric	Right	zero	The state-wide mental health services number for the patient	C
681-690	[OACIS Linking Variable]	10	Numeric	Right	zero	The Open Architecture Clinical Information System (OACIS) number for the patient	O
691	[Adult / Child Flag]	1	Alpha	Left	space	Indicate if the patient is a child or not	C
692	<i>[First psychiatric admission]</i>	1	<i>Numeric</i>	<i>Left</i>	<i>zero</i>		C
693	[Previous Specialised Treatment]	1	Numeric	Right	space	The previous admission(s) or service contact(s) for the specialised treatment provided to the patient	C
694	[Employment Status]	1	Numeric	Left	zero	Indicates the employment status immediately prior to admission, as reported by the patient and as defined by the categories given	C
695	[Pension Status]	1	Numeric	Left	zero	The patient's pension status	C
696	[Type Of Usual Accommodation]	1	Numeric	Left	space	The patient's usual type of accommodation	M
697	[Date Of Birth Accuracy Flag]	1	Numeric	Left	zero	Indicates whether the date of birth is accurate or whether any part of the date of birth is unknown	O
698-705	[Date Of First Operating Theatre Procedure]	8	Numeric	Left	zero	Date of the first procedure performed in an Operating Theatre for an episode of care	C
706-709	[Time Of First Operating Theatre Procedure]	4	Numeric	Left	zero	The time of the patient's first operating theatre procedure	C

OFFICIAL

710-719	[Ward On Discharge]	10	Alpha/Numeric	Left	space	The ward where the patient last separated	C
720	[Condition Onset Flag] for [External Cause]	1	Numeric	Left	space	A qualifier for each coded diagnosis to indicate the onset of the condition relative to the beginning of the admitted patient episode of care, as represented by a code	M
721	[Condition Onset Flag] for [Place Of Occurrence]	1	Numeric	Left	space	A qualifier for each coded diagnosis to indicate the onset of the condition relative to the beginning of the admitted patient episode of care, as represented by a code	M
722	[Condition Onset Flag] for [Activity When Injured]	1	Numeric	Left	space	A qualifier for each coded diagnosis to indicate the onset of the condition relative to the beginning of the admitted patient episode of care, as represented by a code	M
723-730	[Date Of Transfer To Discharge Lounge]	8	Numeric	Left	zero	The date the patient was transferred to a Discharge/Transit Lounge during their hospital admission	C
731-734	[Time Of Transfer To Discharge Lounge]	4	Numeric	Right	zero	The time the patient was transferred to the discharge lounge	C
735-744	[Ward On Admission]	10	Alpha/Numeric	Left	space	The ward where the patient was first admitted	C
745-754	[Research Items]	10	Alpha/Numeric	Left	space	The public hospital research activities cluster identified in the patient record	O
755-758	[Preferred Language]	4	Numeric	Right	zero	The language the patient prefer to communicate	O
759-762	[Religious Affiliation]	4	Numeric	Right	zero	The patient's professed religious affiliation	O
763	[Interpreter Required]	1	Numeric	Left	space	The patient's professed religious affiliation	O
764-783	[EPAS Site Visit ID]	20	Numeric	Right	zero	The site visit ID from Sunrise EMR	C
784-785	[Mental Health Accommodation Prior]	2	Numeric	Right	zero	The patient's prior accommodation status	C

OFFICIAL

786-790	[Additional Diagnosis] (025)	5	Alpha/Numeric	Left	space	A condition or complaint either coexisting with the principal diagnosis or arising during the episode of admitted patient care, episode of residential care or attendance at a health-care establishment, as represented by a code	O
791	[Condition Onset Flag] for [Additional Diagnosis] (025)	1	Numeric	Left	space	A qualifier for each coded diagnosis to indicate the onset of the condition relative to the beginning of the admitted patient episode of care, as represented by a code	C
792-796	[Additional Diagnosis] (026)	5	Alpha/Numeric	Left	space	A condition or complaint either coexisting with the principal diagnosis or arising during the episode of admitted patient care, episode of residential care or attendance at a health-care establishment, as represented by a code	O
797	[Condition Onset Flag] for [Additional Diagnosis] (026)	1	Numeric	Left	space	A qualifier for each coded diagnosis to indicate the onset of the condition relative to the beginning of the admitted patient episode of care, as represented by a code	C
798-802	[Additional Diagnosis] (027)	5	Alpha/Numeric	Left	space	A condition or complaint either coexisting with the principal diagnosis or arising during the episode of admitted patient care, episode of residential care or attendance at a health-care establishment, as represented by a code	O
803	[Condition Onset Flag] for [Additional Diagnosis] (027)	1	Numeric	Left	space	A qualifier for each coded diagnosis to indicate the onset of the condition relative to the beginning of the admitted patient episode of care, as represented by a code	C
804-808	[Additional Diagnosis] (028)	5	Alpha/Numeric	Left	space	A condition or complaint either coexisting with the principal diagnosis or arising during the episode of admitted patient care, episode of residential care or attendance at a health-care establishment, as represented by a code	O
809	[Condition Onset Flag] for [Additional Diagnosis] (028)	1	Numeric	Left	space	A qualifier for each coded diagnosis to indicate the onset of the condition relative to the beginning of the admitted patient episode of care, as represented by a code	C
810-814	[Additional Diagnosis] (029)	5	Alpha/Numeric	Left	space	A condition or complaint either coexisting with the principal diagnosis or arising during the	O

OFFICIAL

						episode of admitted patient care, episode of residential care or attendance at a health-care establishment, as represented by a code	
815	[Condition Onset Flag] for [Additional Diagnosis] (029)	1	Numeric	Left	space	A qualifier for each coded diagnosis to indicate the onset of the condition relative to the beginning of the admitted patient episode of care, as represented by a code	C
816-820	[Additional Diagnosis] (030)	5	Alpha/Numeric	Left	space	A condition or complaint either coexisting with the principal diagnosis or arising during the episode of admitted patient care, episode of residential care or attendance at a health-care establishment, as represented by a code	O
821	[Condition Onset Flag] for [Additional Diagnosis] (030)	1	Numeric	Left	space	A qualifier for each coded diagnosis to indicate the onset of the condition relative to the beginning of the admitted patient episode of care, as represented by a code	C
822-826	[Additional Diagnosis] (031)	5	Alpha/Numeric	Left	space	A condition or complaint either coexisting with the principal diagnosis or arising during the episode of admitted patient care, episode of residential care or attendance at a health-care establishment, as represented by a code	O
827	[Condition Onset Flag] for [Additional Diagnosis] (031)	1	Numeric	Left	space	A qualifier for each coded diagnosis to indicate the onset of the condition relative to the beginning of the admitted patient episode of care, as represented by a code	C
828-832	[Additional Diagnosis] (032)	5	Alpha/Numeric	Left	space	A condition or complaint either coexisting with the principal diagnosis or arising during the episode of admitted patient care, episode of residential care or attendance at a health-care establishment, as represented by a code	O
833	[Condition Onset Flag] for [Additional Diagnosis] (032)	1	Numeric	Left	space	A qualifier for each coded diagnosis to indicate the onset of the condition relative to the beginning of the admitted patient episode of care, as represented by a code	C
834-838	[Additional Diagnosis] (033)	5	Alpha/Numeric	Left	space	A condition or complaint either coexisting with the principal diagnosis or arising during the episode of admitted patient care, episode of residential care or attendance at a health-care	O

OFFICIAL

						establishment, as represented by a code	
839	[Condition Onset Flag] for [Additional Diagnosis] (033)	1	Numeric	Left	space	A qualifier for each coded diagnosis to indicate the onset of the condition relative to the beginning of the admitted patient episode of care, as represented by a code	C
840-844	[Additional Diagnosis] (034)	5	Alpha/Numeric	Left	space	A condition or complaint either coexisting with the principal diagnosis or arising during the episode of admitted patient care, episode of residential care or attendance at a health-care establishment, as represented by a code	O
845	[Condition Onset Flag] for [Additional Diagnosis] (034)	1	Numeric	Left	space	A qualifier for each coded diagnosis to indicate the onset of the condition relative to the beginning of the admitted patient episode of care, as represented by a code	C
846-850	[Additional Diagnosis] (035)	5	Alpha/Numeric	Left	space	A condition or complaint either coexisting with the principal diagnosis or arising during the episode of admitted patient care, episode of residential care or attendance at a health-care establishment, as represented by a code	O
851	[Condition Onset Flag] for [Additional Diagnosis] (035)	1	Numeric	Left	space	A qualifier for each coded diagnosis to indicate the onset of the condition relative to the beginning of the admitted patient episode of care, as represented by a code	C
852-856	[Additional Diagnosis] (036)	5	Alpha/Numeric	Left	space	A condition or complaint either coexisting with the principal diagnosis or arising during the episode of admitted patient care, episode of residential care or attendance at a health-care establishment, as represented by a code	O
857	[Condition Onset Flag] for [Additional Diagnosis] (036)	1	Numeric	Left	space	A qualifier for each coded diagnosis to indicate the onset of the condition relative to the beginning of the admitted patient episode of care, as represented by a code	C
858-862	[Additional Diagnosis] (037)	5	Alpha/Numeric	Left	space	A condition or complaint either coexisting with the principal diagnosis or arising during the episode of admitted patient care, episode of residential care or attendance at a health-care establishment, as represented by a code	O

OFFICIAL

863	[Condition Onset Flag] for [Additional Diagnosis] (037)	1	Numeric	Left	space	A qualifier for each coded diagnosis to indicate the onset of the condition relative to the beginning of the admitted patient episode of care, as represented by a code	C
864-868	[Additional Diagnosis] (038)	5	Alpha/Numeric	Left	space	A condition or complaint either coexisting with the principal diagnosis or arising during the episode of admitted patient care, episode of residential care or attendance at a health-care establishment, as represented by a code	O
869	[Condition Onset Flag] for [Additional Diagnosis] (038)	1	Numeric	Left	space	A qualifier for each coded diagnosis to indicate the onset of the condition relative to the beginning of the admitted patient episode of care, as represented by a code	C
870-874	[Additional Diagnosis] (039)	5	Alpha/Numeric	Left	space	A condition or complaint either coexisting with the principal diagnosis or arising during the episode of admitted patient care, episode of residential care or attendance at a health-care establishment, as represented by a code	O
875	[Condition Onset Flag] for [Additional Diagnosis] (039)	1	Numeric	Left	space	A qualifier for each coded diagnosis to indicate the onset of the condition relative to the beginning of the admitted patient episode of care, as represented by a code	C
876-880	[Additional Diagnosis] (040)	5	Alpha/Numeric	Left	space	A condition or complaint either coexisting with the principal diagnosis or arising during the episode of admitted patient care, episode of residential care or attendance at a health-care establishment, as represented by a code	O
881	[Condition Onset Flag] for [Additional Diagnosis] (040)	1	Numeric	Left	space	A qualifier for each coded diagnosis to indicate the onset of the condition relative to the beginning of the admitted patient episode of care, as represented by a code	C
882-886	[Additional Diagnosis] (041)	5	Alpha/Numeric	Left	space	A condition or complaint either coexisting with the principal diagnosis or arising during the episode of admitted patient care, episode of residential care or attendance at a health-care establishment, as represented by a code	O
887	[Condition Onset Flag] for [Additional Diagnosis] (041)	1	Numeric	Left	space	A qualifier for each coded diagnosis to indicate the onset of the condition relative to the	C

OFFICIAL

						beginning of the admitted patient episode of care, as represented by a code	
888-892	[Additional Diagnosis] (042)	5	Alpha/Numeric	Left	space	A condition or complaint either coexisting with the principal diagnosis or arising during the episode of admitted patient care, episode of residential care or attendance at a health-care establishment, as represented by a code	O
893	[Condition Onset Flag] for [Additional Diagnosis] (042)	1	Numeric	Left	space	A qualifier for each coded diagnosis to indicate the onset of the condition relative to the beginning of the admitted patient episode of care, as represented by a code	C
894-898	[Additional Diagnosis] (043)	5	Alpha/Numeric	Left	space	A condition or complaint either coexisting with the principal diagnosis or arising during the episode of admitted patient care, episode of residential care or attendance at a health-care establishment, as represented by a code	O
899	[Condition Onset Flag] for [Additional Diagnosis] (043)	1	Numeric	Left	space	A qualifier for each coded diagnosis to indicate the onset of the condition relative to the beginning of the admitted patient episode of care, as represented by a code	C
900-904	[Additional Diagnosis] (044)	5	Alpha/Numeric	Left	space	A condition or complaint either coexisting with the principal diagnosis or arising during the episode of admitted patient care, episode of residential care or attendance at a health-care establishment, as represented by a code	O
905	[Condition Onset Flag] for [Additional Diagnosis] (044)	1	Numeric	Left	space	A qualifier for each coded diagnosis to indicate the onset of the condition relative to the beginning of the admitted patient episode of care, as represented by a code	C
906-910	[Additional Diagnosis] (045)	5	Alpha/Numeric	Left	space	A condition or complaint either coexisting with the principal diagnosis or arising during the episode of admitted patient care, episode of residential care or attendance at a health-care establishment, as represented by a code	O
911	[Condition Onset Flag] for [Additional Diagnosis] (045)	1	Numeric	Left	space	A qualifier for each coded diagnosis to indicate the onset of the condition relative to the beginning of the admitted patient episode of care, as represented by a code	C

OFFICIAL

912-916	[Additional Diagnosis] (046)	5	Alpha/Numeric	Left	space	A condition or complaint either coexisting with the principal diagnosis or arising during the episode of admitted patient care, episode of residential care or attendance at a health-care establishment, as represented by a code	O
917	[Condition Onset Flag] for [Additional Diagnosis] (046)	1	Numeric	Left	space	A qualifier for each coded diagnosis to indicate the onset of the condition relative to the beginning of the admitted patient episode of care, as represented by a code	C
918-922	[Additional Diagnosis] (047)	5	Alpha/Numeric	Left	space	A condition or complaint either coexisting with the principal diagnosis or arising during the episode of admitted patient care, episode of residential care or attendance at a health-care establishment, as represented by a code	O
923	[Condition Onset Flag] for [Additional Diagnosis] (047)	1	Numeric	Left	space	A qualifier for each coded diagnosis to indicate the onset of the condition relative to the beginning of the admitted patient episode of care, as represented by a code	C
924-928	[Additional Diagnosis] (048)	5	Alpha/Numeric	Left	space	A condition or complaint either coexisting with the principal diagnosis or arising during the episode of admitted patient care, episode of residential care or attendance at a health-care establishment, as represented by a code	O
929	[Condition Onset Flag] for [Additional Diagnosis] (048)	1	Numeric	Left	space	A qualifier for each coded diagnosis to indicate the onset of the condition relative to the beginning of the admitted patient episode of care, as represented by a code	C
930-934	[Additional Diagnosis] (049)	5	Alpha/Numeric	Left	space	A condition or complaint either coexisting with the principal diagnosis or arising during the episode of admitted patient care, episode of residential care or attendance at a health-care establishment, as represented by a code	O
935	[Condition Onset Flag] for [Additional Diagnosis] (049)	1	Numeric	Left	space	A qualifier for each coded diagnosis to indicate the onset of the condition relative to the beginning of the admitted patient episode of care, as represented by a code	C
936-940	[Additional Diagnosis] (050)	5	Alpha/Numeric	Left	space	A condition or complaint either coexisting with the principal diagnosis or arising during the	O

OFFICIAL

						episode of admitted patient care, episode of residential care or attendance at a health-care establishment, as represented by a code	
941	[Condition Onset Flag] for [Additional Diagnosis] (050)	1	Numeric	Left	space	A qualifier for each coded diagnosis to indicate the onset of the condition relative to the beginning of the admitted patient episode of care, as represented by a code	C
942-946	[Additional Diagnosis] (051)	5	Alpha/Numeric	Left	space	A condition or complaint either coexisting with the principal diagnosis or arising during the episode of admitted patient care, episode of residential care or attendance at a health-care establishment, as represented by a code	O
947	[Condition Onset Flag] for [Additional Diagnosis] (051)	1	Numeric	Left	space	A qualifier for each coded diagnosis to indicate the onset of the condition relative to the beginning of the admitted patient episode of care, as represented by a code	C
948-952	[Additional Diagnosis] (052)	5	Alpha/Numeric	Left	space	A condition or complaint either coexisting with the principal diagnosis or arising during the episode of admitted patient care, episode of residential care or attendance at a health-care establishment, as represented by a code	O
953	[Condition Onset Flag] for [Additional Diagnosis] (052)	1	Numeric	Left	space	A qualifier for each coded diagnosis to indicate the onset of the condition relative to the beginning of the admitted patient episode of care, as represented by a code	C
954-958	[Additional Diagnosis] (053)	5	Alpha/Numeric	Left	space	A condition or complaint either coexisting with the principal diagnosis or arising during the episode of admitted patient care, episode of residential care or attendance at a health-care establishment, as represented by a code	O
959	[Condition Onset Flag] for [Additional Diagnosis] (053)	1	Numeric	Left	space	A qualifier for each coded diagnosis to indicate the onset of the condition relative to the beginning of the admitted patient episode of care, as represented by a code	C
960-964	[Additional Diagnosis] (054)	5	Alpha/Numeric	Left	space	A condition or complaint either coexisting with the principal diagnosis or arising during the episode of admitted patient care, episode of residential care or attendance at a health-care	O

OFFICIAL

						establishment, as represented by a code	
965	[Condition Onset Flag] for [Additional Diagnosis] (054)	1	Numeric	Left	space	A qualifier for each coded diagnosis to indicate the onset of the condition relative to the beginning of the admitted patient episode of care, as represented by a code	C
966-970	[Additional Diagnosis] (055)	5	Alpha/Numeric	Left	space	A condition or complaint either coexisting with the principal diagnosis or arising during the episode of admitted patient care, episode of residential care or attendance at a health-care establishment, as represented by a code	O
971	[Condition Onset Flag] for [Additional Diagnosis] (055)	1	Numeric	Left	space	A qualifier for each coded diagnosis to indicate the onset of the condition relative to the beginning of the admitted patient episode of care, as represented by a code	C
972-976	[Additional Diagnosis] (056)	5	Alpha/Numeric	Left	space	A condition or complaint either coexisting with the principal diagnosis or arising during the episode of admitted patient care, episode of residential care or attendance at a health-care establishment, as represented by a code	O
977	[Condition Onset Flag] for [Additional Diagnosis] (056)	1	Numeric	Left	space	A qualifier for each coded diagnosis to indicate the onset of the condition relative to the beginning of the admitted patient episode of care, as represented by a code	C
978-982	[Additional Diagnosis] (057)	5	Alpha/Numeric	Left	space	A condition or complaint either coexisting with the principal diagnosis or arising during the episode of admitted patient care, episode of residential care or attendance at a health-care establishment, as represented by a code	O
983	[Condition Onset Flag] for [Additional Diagnosis] (057)	1	Numeric	Left	space	A qualifier for each coded diagnosis to indicate the onset of the condition relative to the beginning of the admitted patient episode of care, as represented by a code	C
984-988	[Additional Diagnosis] (058)	5	Alpha/Numeric	Left	space	A condition or complaint either coexisting with the principal diagnosis or arising during the episode of admitted patient care, episode of residential care or attendance at a health-care establishment, as represented by a code	O

OFFICIAL

989	[Condition Onset Flag] for [Additional Diagnosis] (058)	1	Numeric	Left	space	A qualifier for each coded diagnosis to indicate the onset of the condition relative to the beginning of the admitted patient episode of care, as represented by a code	C
990-994	[Additional Diagnosis] (059)	5	Alpha/Numeric	Left	space	A condition or complaint either coexisting with the principal diagnosis or arising during the episode of admitted patient care, episode of residential care or attendance at a health-care establishment, as represented by a code	O
995	[Condition Onset Flag] for [Additional Diagnosis] (059)	1	Numeric	Left	space	A qualifier for each coded diagnosis to indicate the onset of the condition relative to the beginning of the admitted patient episode of care, as represented by a code	C
996-1000	[Additional Diagnosis] (060)	5	Alpha/Numeric	Left	space	A condition or complaint either coexisting with the principal diagnosis or arising during the episode of admitted patient care, episode of residential care or attendance at a health-care establishment, as represented by a code	O
1001	[Condition Onset Flag] for [Additional Diagnosis] (060)	1	Numeric	Left	space	A qualifier for each coded diagnosis to indicate the onset of the condition relative to the beginning of the admitted patient episode of care, as represented by a code	C
1002-1006	[Additional Diagnosis] (061)	5	Alpha/Numeric	Left	space	A condition or complaint either coexisting with the principal diagnosis or arising during the episode of admitted patient care, episode of residential care or attendance at a health-care establishment, as represented by a code	O
1007	[Condition Onset Flag] for [Additional Diagnosis] (061)	1	Numeric	Left	space	A qualifier for each coded diagnosis to indicate the onset of the condition relative to the beginning of the admitted patient episode of care, as represented by a code	C
1008-1012	[Additional Diagnosis] (062)	5	Alpha/Numeric	Left	space	A condition or complaint either coexisting with the principal diagnosis or arising during the episode of admitted patient care, episode of residential care or attendance at a health-care establishment, as represented by a code	O
1013	[Condition Onset Flag] for [Additional Diagnosis] (062)	1	Numeric	Left	space	A qualifier for each coded diagnosis to indicate the onset of the condition relative to the	C

OFFICIAL

						beginning of the admitted patient episode of care, as represented by a code	
1014-1018	[Additional Diagnosis] (063)	5	Alpha/Numeric	Left	space	A condition or complaint either coexisting with the principal diagnosis or arising during the episode of admitted patient care, episode of residential care or attendance at a health-care establishment, as represented by a code	O
1019	[Condition Onset Flag] for [Additional Diagnosis] (063)	1	Numeric	Left	space	A qualifier for each coded diagnosis to indicate the onset of the condition relative to the beginning of the admitted patient episode of care, as represented by a code	C
1020-1024	[Additional Diagnosis] (064)	5	Alpha/Numeric	Left	space	A condition or complaint either coexisting with the principal diagnosis or arising during the episode of admitted patient care, episode of residential care or attendance at a health-care establishment, as represented by a code	O
1025	[Condition Onset Flag] for [Additional Diagnosis] (064)	1	Numeric	Left	space	A qualifier for each coded diagnosis to indicate the onset of the condition relative to the beginning of the admitted patient episode of care, as represented by a code	C
1026-1030	[Additional Diagnosis] (065)	5	Alpha/Numeric	Left	space	A condition or complaint either coexisting with the principal diagnosis or arising during the episode of admitted patient care, episode of residential care or attendance at a health-care establishment, as represented by a code	O
1031	[Condition Onset Flag] for [Additional Diagnosis] (065)	1	Numeric	Left	space	A qualifier for each coded diagnosis to indicate the onset of the condition relative to the beginning of the admitted patient episode of care, as represented by a code	C
1032-1036	[Additional Diagnosis] (066)	5	Alpha/Numeric	Left	space	A condition or complaint either coexisting with the principal diagnosis or arising during the episode of admitted patient care, episode of residential care or attendance at a health-care establishment, as represented by a code	O
1037	[Condition Onset Flag] for [Additional Diagnosis] (066)	1	Numeric	Left	space	A qualifier for each coded diagnosis to indicate the onset of the condition relative to the beginning of the admitted patient episode of care, as represented by a code	C

OFFICIAL

1038-1042	[Additional Diagnosis] (067)	5	Alpha/Numeric	Left	space	A condition or complaint either coexisting with the principal diagnosis or arising during the episode of admitted patient care, episode of residential care or attendance at a health-care establishment, as represented by a code	O
1043	[Condition Onset Flag] for [Additional Diagnosis] (067)	1	Numeric	Left	space	A qualifier for each coded diagnosis to indicate the onset of the condition relative to the beginning of the admitted patient episode of care, as represented by a code	C
1044-1048	[Additional Diagnosis] (068)	5	Alpha/Numeric	Left	space	A condition or complaint either coexisting with the principal diagnosis or arising during the episode of admitted patient care, episode of residential care or attendance at a health-care establishment, as represented by a code	O
1049	[Condition Onset Flag] for [Additional Diagnosis] (068)	1	Numeric	Left	space	A qualifier for each coded diagnosis to indicate the onset of the condition relative to the beginning of the admitted patient episode of care, as represented by a code	C
1050-1054	[Additional Diagnosis] (069)	5	Alpha/Numeric	Left	space	A condition or complaint either coexisting with the principal diagnosis or arising during the episode of admitted patient care, episode of residential care or attendance at a health-care establishment, as represented by a code	O
1055	[Condition Onset Flag] for [Additional Diagnosis] (069)	1	Numeric	Left	space	A qualifier for each coded diagnosis to indicate the onset of the condition relative to the beginning of the admitted patient episode of care, as represented by a code	C
1056-1060	[Additional Diagnosis] (070)	5	Alpha/Numeric	Left	space	A condition or complaint either coexisting with the principal diagnosis or arising during the episode of admitted patient care, episode of residential care or attendance at a health-care establishment, as represented by a code	O
1061	[Condition Onset Flag] for [Additional Diagnosis] (070)	1	Numeric	Left	space	A qualifier for each coded diagnosis to indicate the onset of the condition relative to the beginning of the admitted patient episode of care, as represented by a code	C
1062-1066	[Additional Diagnosis] (071)	5	Alpha/Numeric	Left	space	A condition or complaint either coexisting with the principal diagnosis or arising during the	O

OFFICIAL

						episode of admitted patient care, episode of residential care or attendance at a health-care establishment, as represented by a code	
1067	[Condition Onset Flag] for [Additional Diagnosis] (071)	1	Numeric	Left	space	A qualifier for each coded diagnosis to indicate the onset of the condition relative to the beginning of the admitted patient episode of care, as represented by a code	C
1068-1072	[Additional Diagnosis] (072)	5	Alpha/Numeric	Left	space	A condition or complaint either coexisting with the principal diagnosis or arising during the episode of admitted patient care, episode of residential care or attendance at a health-care establishment, as represented by a code	O
1073	[Condition Onset Flag] for [Additional Diagnosis] (072)	1	Numeric	Left	space	A qualifier for each coded diagnosis to indicate the onset of the condition relative to the beginning of the admitted patient episode of care, as represented by a code	C
1074-1078	[Additional Diagnosis] (073)	5	Alpha/Numeric	Left	space	A condition or complaint either coexisting with the principal diagnosis or arising during the episode of admitted patient care, episode of residential care or attendance at a health-care establishment, as represented by a code	O
1079	[Condition Onset Flag] for [Additional Diagnosis] (073)	1	Numeric	Left	space	A qualifier for each coded diagnosis to indicate the onset of the condition relative to the beginning of the admitted patient episode of care, as represented by a code	C
1080-1084	[Additional Diagnosis] (074)	5	Alpha/Numeric	Left	space	A condition or complaint either coexisting with the principal diagnosis or arising during the episode of admitted patient care, episode of residential care or attendance at a health-care establishment, as represented by a code	O
1085	[Condition Onset Flag] for [Additional Diagnosis] (074)	1	Numeric	Left	space	A qualifier for each coded diagnosis to indicate the onset of the condition relative to the beginning of the admitted patient episode of care, as represented by a code	C
1086-1090	[Additional Diagnosis] (075)	5	Alpha/Numeric	Left	space	A condition or complaint either coexisting with the principal diagnosis or arising during the episode of admitted patient care, episode of residential care or attendance at a health-care	O

OFFICIAL

						establishment, as represented by a code	
1091	[Condition Onset Flag] for [Additional Diagnosis] (075)	1	Numeric	Left	space	A qualifier for each coded diagnosis to indicate the onset of the condition relative to the beginning of the admitted patient episode of care, as represented by a code	C
1092-1096	[Additional Diagnosis] (076)	5	Alpha/Numeric	Left	space	A condition or complaint either coexisting with the principal diagnosis or arising during the episode of admitted patient care, episode of residential care or attendance at a health-care establishment, as represented by a code	O
1097	[Condition Onset Flag] for [Additional Diagnosis] (076)	1	Numeric	Left	space	A qualifier for each coded diagnosis to indicate the onset of the condition relative to the beginning of the admitted patient episode of care, as represented by a code	C
1098-1102	[Additional Diagnosis] (077)	5	Alpha/Numeric	Left	space	A condition or complaint either coexisting with the principal diagnosis or arising during the episode of admitted patient care, episode of residential care or attendance at a health-care establishment, as represented by a code	O
1103	[Condition Onset Flag] for [Additional Diagnosis] (077)	1	Numeric	Left	space	A qualifier for each coded diagnosis to indicate the onset of the condition relative to the beginning of the admitted patient episode of care, as represented by a code	C
1104-1108	[Additional Diagnosis] (078)	5	Alpha/Numeric	Left	space	A condition or complaint either coexisting with the principal diagnosis or arising during the episode of admitted patient care, episode of residential care or attendance at a health-care establishment, as represented by a code	O
1109	[Condition Onset Flag] for [Additional Diagnosis] (078)	1	Numeric	Left	space	A qualifier for each coded diagnosis to indicate the onset of the condition relative to the beginning of the admitted patient episode of care, as represented by a code	C
1110-1114	[Additional Diagnosis] (079)	5	Alpha/Numeric	Left	space	A condition or complaint either coexisting with the principal diagnosis or arising during the episode of admitted patient care, episode of residential care or attendance at a health-care establishment, as represented by a code	O

OFFICIAL

1115	[Condition Onset Flag] for [Additional Diagnosis] (079)	1	Numeric	Left	space	A qualifier for each coded diagnosis to indicate the onset of the condition relative to the beginning of the admitted patient episode of care, as represented by a code	C
1116-1120	[Additional Diagnosis] (080)	5	Alpha/Numeric	Left	space	A condition or complaint either coexisting with the principal diagnosis or arising during the episode of admitted patient care, episode of residential care or attendance at a health-care establishment, as represented by a code	O
1121	[Condition Onset Flag] for [Additional Diagnosis] (080)	1	Numeric	Left	space	A qualifier for each coded diagnosis to indicate the onset of the condition relative to the beginning of the admitted patient episode of care, as represented by a code	C
1122-1126	[Additional Diagnosis] (081)	5	Alpha/Numeric	Left	space	A condition or complaint either coexisting with the principal diagnosis or arising during the episode of admitted patient care, episode of residential care or attendance at a health-care establishment, as represented by a code	O
1127	[Condition Onset Flag] for [Additional Diagnosis] (081)	1	Numeric	Left	space	A qualifier for each coded diagnosis to indicate the onset of the condition relative to the beginning of the admitted patient episode of care, as represented by a code	C
1128-1132	[Additional Diagnosis] (082)	5	Alpha/Numeric	Left	space	A condition or complaint either coexisting with the principal diagnosis or arising during the episode of admitted patient care, episode of residential care or attendance at a health-care establishment, as represented by a code	O
1133	[Condition Onset Flag] for [Additional Diagnosis] (082)	1	Numeric	Left	space	A qualifier for each coded diagnosis to indicate the onset of the condition relative to the beginning of the admitted patient episode of care, as represented by a code	C
1134-1138	[Additional Diagnosis] (083)	5	Alpha/Numeric	Left	space	A condition or complaint either coexisting with the principal diagnosis or arising during the episode of admitted patient care, episode of residential care or attendance at a health-care establishment, as represented by a code	O
1139	[Condition Onset Flag] for [Additional Diagnosis] (083)	1	Numeric	Left	space	A qualifier for each coded diagnosis to indicate the onset of the condition relative to the	C

OFFICIAL

						beginning of the admitted patient episode of care, as represented by a code	
1140-1144	[Additional Diagnosis] (084)	5	Alpha/Numeric	Left	space	A condition or complaint either coexisting with the principal diagnosis or arising during the episode of admitted patient care, episode of residential care or attendance at a health-care establishment, as represented by a code	O
1145	[Condition Onset Flag] for [Additional Diagnosis] (084)	1	Numeric	Left	space	A qualifier for each coded diagnosis to indicate the onset of the condition relative to the beginning of the admitted patient episode of care, as represented by a code	C
1146-1150	[Additional Diagnosis] (085)	5	Alpha/Numeric	Left	space	A condition or complaint either coexisting with the principal diagnosis or arising during the episode of admitted patient care, episode of residential care or attendance at a health-care establishment, as represented by a code	O
1151	[Condition Onset Flag] for [Additional Diagnosis] (085)	1	Numeric	Left	space	A qualifier for each coded diagnosis to indicate the onset of the condition relative to the beginning of the admitted patient episode of care, as represented by a code	C
1152-1156	[Additional Diagnosis] (086)	5	Alpha/Numeric	Left	space	A condition or complaint either coexisting with the principal diagnosis or arising during the episode of admitted patient care, episode of residential care or attendance at a health-care establishment, as represented by a code	O
1157	[Condition Onset Flag] for [Additional Diagnosis] (086)	1	Numeric	Left	space	A qualifier for each coded diagnosis to indicate the onset of the condition relative to the beginning of the admitted patient episode of care, as represented by a code	C
1158-1162	[Additional Diagnosis] (087)	5	Alpha/Numeric	Left	space	A condition or complaint either coexisting with the principal diagnosis or arising during the episode of admitted patient care, episode of residential care or attendance at a health-care establishment, as represented by a code	O
1163	[Condition Onset Flag] for [Additional Diagnosis] (087)	1	Numeric	Left	space	A qualifier for each coded diagnosis to indicate the onset of the condition relative to the beginning of the admitted patient episode of care, as represented by a code	C

OFFICIAL

1164-1168	[Additional Diagnosis] (088)	5	Alpha/Numeric	Left	space	A condition or complaint either coexisting with the principal diagnosis or arising during the episode of admitted patient care, episode of residential care or attendance at a health-care establishment, as represented by a code	O
1169	[Condition Onset Flag] for [Additional Diagnosis] (088)	1	Numeric	Left	space	A qualifier for each coded diagnosis to indicate the onset of the condition relative to the beginning of the admitted patient episode of care, as represented by a code	C
1170-1174	[Additional Diagnosis] (089)	5	Alpha/Numeric	Left	space	A condition or complaint either coexisting with the principal diagnosis or arising during the episode of admitted patient care, episode of residential care or attendance at a health-care establishment, as represented by a code	O
1175	[Condition Onset Flag] for [Additional Diagnosis] (089)	1	Numeric	Left	space	A qualifier for each coded diagnosis to indicate the onset of the condition relative to the beginning of the admitted patient episode of care, as represented by a code	C
1176-1180	[Additional Diagnosis] (090)	5	Alpha/Numeric	Left	space	A condition or complaint either coexisting with the principal diagnosis or arising during the episode of admitted patient care, episode of residential care or attendance at a health-care establishment, as represented by a code	O
1181	[Condition Onset Flag] for [Additional Diagnosis] (090)	1	Numeric	Left	space	A qualifier for each coded diagnosis to indicate the onset of the condition relative to the beginning of the admitted patient episode of care, as represented by a code	C
1182-1186	[Additional Diagnosis] (091)	5	Alpha/Numeric	Left	space	A condition or complaint either coexisting with the principal diagnosis or arising during the episode of admitted patient care, episode of residential care or attendance at a health-care establishment, as represented by a code	O
1187	[Condition Onset Flag] for [Additional Diagnosis] (091)	1	Numeric	Left	space	A qualifier for each coded diagnosis to indicate the onset of the condition relative to the beginning of the admitted patient episode of care, as represented by a code	C
1188-1192	[Additional Diagnosis] (092)	5	Alpha/Numeric	Left	space	A condition or complaint either coexisting with the principal diagnosis or arising during the	O

OFFICIAL

						episode of admitted patient care, episode of residential care or attendance at a health-care establishment, as represented by a code	
1193	[Condition Onset Flag] for [Additional Diagnosis] (092)	1	Numeric	Left	space	A qualifier for each coded diagnosis to indicate the onset of the condition relative to the beginning of the admitted patient episode of care, as represented by a code	C
1194-1198	[Additional Diagnosis] (093)	5	Alpha/Numeric	Left	space	A condition or complaint either coexisting with the principal diagnosis or arising during the episode of admitted patient care, episode of residential care or attendance at a health-care establishment, as represented by a code	O
1199	[Condition Onset Flag] for [Additional Diagnosis] (093)	1	Numeric	Left	space	A qualifier for each coded diagnosis to indicate the onset of the condition relative to the beginning of the admitted patient episode of care, as represented by a code	C
1200-1204	[Additional Diagnosis] (094)	5	Alpha/Numeric	Left	space	A condition or complaint either coexisting with the principal diagnosis or arising during the episode of admitted patient care, episode of residential care or attendance at a health-care establishment, as represented by a code	O
1205	[Condition Onset Flag] for [Additional Diagnosis] (094)	1	Numeric	Left	space	A qualifier for each coded diagnosis to indicate the onset of the condition relative to the beginning of the admitted patient episode of care, as represented by a code	C
1206-1210	[Additional Diagnosis] (095)	5	Alpha/Numeric	Left	space	A condition or complaint either coexisting with the principal diagnosis or arising during the episode of admitted patient care, episode of residential care or attendance at a health-care establishment, as represented by a code	O
1211	[Condition Onset Flag] for [Additional Diagnosis] (095)	1	Numeric	Left	space	A qualifier for each coded diagnosis to indicate the onset of the condition relative to the beginning of the admitted patient episode of care, as represented by a code	C
1212-1216	[Additional Diagnosis] (096)	5	Alpha/Numeric	Left	space	A condition or complaint either coexisting with the principal diagnosis or arising during the episode of admitted patient care, episode of residential care or attendance at a health-care	O

OFFICIAL

						establishment, as represented by a code	
1217	[Condition Onset Flag] for [Additional Diagnosis] (096)	1	Numeric	Left	space	A qualifier for each coded diagnosis to indicate the onset of the condition relative to the beginning of the admitted patient episode of care, as represented by a code	C
1218-1222	[Additional Diagnosis] (097)	5	Alpha/Numeric	Left	space	A condition or complaint either coexisting with the principal diagnosis or arising during the episode of admitted patient care, episode of residential care or attendance at a health-care establishment, as represented by a code	O
1223	[Condition Onset Flag] for [Additional Diagnosis] (097)	1	Numeric	Left	space	A qualifier for each coded diagnosis to indicate the onset of the condition relative to the beginning of the admitted patient episode of care, as represented by a code	C
1224-1228	[Additional Diagnosis] (098)	5	Alpha/Numeric	Left	space	A condition or complaint either coexisting with the principal diagnosis or arising during the episode of admitted patient care, episode of residential care or attendance at a health-care establishment, as represented by a code	O
1229	[Condition Onset Flag] for [Additional Diagnosis] (098)	1	Numeric	Left	space	A qualifier for each coded diagnosis to indicate the onset of the condition relative to the beginning of the admitted patient episode of care, as represented by a code	C
1230-1234	[Additional Diagnosis] (099)	5	Alpha/Numeric	Left	space	A condition or complaint either coexisting with the principal diagnosis or arising during the episode of admitted patient care, episode of residential care or attendance at a health-care establishment, as represented by a code	O
1235	[Condition Onset Flag] for [Additional Diagnosis] (099)	1	Numeric	Left	space	A qualifier for each coded diagnosis to indicate the onset of the condition relative to the beginning of the admitted patient episode of care, as represented by a code	C
1236-1242	[Procedure] (026)	7	Alpha/Numeric	Left	space	Type of procedure performed on the patient	M
1243	[Procedure Location Indicator] for [Procedure] (026)	1	Alpha/Numeric	Left	space	The hospital where the procedure was performed	C

OFFICIAL

1244-1250	[Procedure] (027)	7	Alpha/Numeric	Left	space	Type of procedure performed on the patient	M
1251	[Procedure Location Indicator] for [Procedure] (027)	1	Alpha/Numeric	Left	space	The hospital where the procedure was performed	C
1252-1258	[Procedure] (028)	7	Alpha/Numeric	Left	space	Type of procedure performed on the patient	M
1259	[Procedure Location Indicator] for [Procedure] (028)	1	Alpha/Numeric	Left	space	The hospital where the procedure was performed	C
1260-1266	[Procedure] (029)	7	Alpha/Numeric	Left	space	Type of procedure performed on the patient	M
1267	[Procedure Location Indicator] for [Procedure] (029)	1	Alpha/Numeric	Left	space	The hospital where the procedure was performed	C
1268-1274	[Procedure] (030)	7	Alpha/Numeric	Left	space	Type of procedure performed on the patient	M
1275	[Procedure Location Indicator] for [Procedure] (030)	1	Alpha/Numeric	Left	space	The hospital where the procedure was performed	C
1276-1282	[Procedure] (031)	7	Alpha/Numeric	Left	space	Type of procedure performed on the patient	M
1283	[Procedure Location Indicator] for [Procedure] (031)	1	Alpha/Numeric	Left	space	The hospital where the procedure was performed	C
1284-1290	[Procedure] (032)	7	Alpha/Numeric	Left	space	Type of procedure performed on the patient	M
1291	[Procedure Location Indicator] for [Procedure] (032)	1	Alpha/Numeric	Left	space	The hospital where the procedure was performed	C
1292-1298	[Procedure] (033)	7	Alpha/Numeric	Left	space	Type of procedure performed on the patient	M
1299	[Procedure Location Indicator] for [Procedure] (033)	1	Alpha/Numeric	Left	space	The hospital where the procedure was performed	C
1300-1306	[Procedure] (034)	7	Alpha/Numeric	Left	space	Type of procedure performed on the patient	M

OFFICIAL

1307	[Procedure Location Indicator] for [Procedure] (034)	1	Alpha/Numeric	Left	space	The hospital where the procedure was performed	C
1308-1314	[Procedure] (035)	7	Alpha/Numeric	Left	space	Type of procedure performed on the patient	M
1315	[Procedure Location Indicator] for [Procedure] (035)	1	Alpha/Numeric	Left	space	The hospital where the procedure was performed	C
1316-1322	[Procedure] (036)	7	Alpha/Numeric	Left	space	Type of procedure performed on the patient	M
1323	[Procedure Location Indicator] for [Procedure] (036)	1	Alpha/Numeric	Left	space	The hospital where the procedure was performed	C
1324-1330	[Procedure] (037)	7	Alpha/Numeric	Left	space	Type of procedure performed on the patient	M
1331	[Procedure Location Indicator] for [Procedure] (037)	1	Alpha/Numeric	Left	space	The hospital where the procedure was performed	C
1332-1338	[Procedure] (038)	7	Alpha/Numeric	Left	space	Type of procedure performed on the patient	M
1339	[Procedure Location Indicator] for [Procedure] (038)	1	Alpha/Numeric	Left	space	The hospital where the procedure was performed	C
1340-1346	[Procedure] (039)	7	Alpha/Numeric	Left	space	Type of procedure performed on the patient	M
1347	[Procedure Location Indicator] for [Procedure] (039)	1	Alpha/Numeric	Left	space	The hospital where the procedure was performed	C
1348-1354	[Procedure] (040)	7	Alpha/Numeric	Left	space	Type of procedure performed on the patient	M
1355	[Procedure Location Indicator] for [Procedure] (040)	1	Alpha/Numeric	Left	space	The hospital where the procedure was performed	C
1356-1362	[Procedure] (041)	7	Alpha/Numeric	Left	space	Type of procedure performed on the patient	M
1363	[Procedure Location Indicator] for [Procedure] (041)	1	Alpha/Numeric	Left	space	The hospital where the procedure was performed	C

OFFICIAL

1364-1370	[Procedure] (042)	7	Alpha/Numeric	Left	space	Type of procedure performed on the patient	M
1371	[Procedure Location Indicator] for [Procedure] (042)	1	Alpha/Numeric	Left	space	The hospital where the procedure was performed	C
1372-1378	[Procedure] (043)	7	Alpha/Numeric	Left	space	Type of procedure performed on the patient	M
1379	[Procedure Location Indicator] for [Procedure] (043)	1	Alpha/Numeric	Left	space	The hospital where the procedure was performed	C
1380-1386	[Procedure] (044)	7	Alpha/Numeric	Left	space	Type of procedure performed on the patient	M
1387	[Procedure Location Indicator] for [Procedure] (044)	1	Alpha/Numeric	Left	space	The hospital where the procedure was performed	C
1388-1394	[Procedure] (045)	7	Alpha/Numeric	Left	space	Type of procedure performed on the patient	M
1395	[Procedure Location Indicator] for [Procedure] (045)	1	Alpha/Numeric	Left	space	The hospital where the procedure was performed	C
1396-1402	[Procedure] (046)	7	Alpha/Numeric	Left	space	Type of procedure performed on the patient	M
1403	[Procedure Location Indicator] for [Procedure] (046)	1	Alpha/Numeric	Left	space	The hospital where the procedure was performed	C
1404-1410	[Procedure] (047)	7	Alpha/Numeric	Left	space	Type of procedure performed on the patient	M
1411	[Procedure Location Indicator] for [Procedure] (047)	1	Alpha/Numeric	Left	space	The hospital where the procedure was performed	C
1412-1418	[Procedure] (048)	7	Alpha/Numeric	Left	space	Type of procedure performed on the patient	M
1419	[Procedure Location Indicator] for [Procedure] (048)	1	Alpha/Numeric	Left	space	The hospital where the procedure was performed	C
1420-1426	[Procedure] (049)	7	Alpha/Numeric	Left	space	Type of procedure performed on the patient	M

OFFICIAL

1427	[Procedure Location Indicator] for [Procedure] (049)	1	Alpha/Numeric	Left	space	The hospital where the procedure was performed	C
1428-1434	[Procedure] (050)	7	Alpha/Numeric	Left	space	Type of procedure performed on the patient	M
1435	[Procedure Location Indicator] for [Procedure] (050)	1	Alpha/Numeric	Left	space	The hospital where the procedure was performed	C
1436-1442	[Procedure] (051)	7	Alpha/Numeric	Left	space	Type of procedure performed on the patient	M
1443	[Procedure Location Indicator] for [Procedure] (051)	1	Alpha/Numeric	Left	space	The hospital where the procedure was performed	C
1444-1450	[Procedure] (052)	7	Alpha/Numeric	Left	space	Type of procedure performed on the patient	M
1451	[Procedure Location Indicator] for [Procedure] (052)	1	Alpha/Numeric	Left	space	The hospital where the procedure was performed	C
1452-1458	[Procedure] (053)	7	Alpha/Numeric	Left	space	Type of procedure performed on the patient	M
1459	[Procedure Location Indicator] for [Procedure] (053)	1	Alpha/Numeric	Left	space	The hospital where the procedure was performed	C
1460-1466	[Procedure] (054)	7	Alpha/Numeric	Left	space	Type of procedure performed on the patient	M
1467	[Procedure Location Indicator] for [Procedure] (054)	1	Alpha/Numeric	Left	space	The hospital where the procedure was performed	C
1468-1474	[Procedure] (055)	7	Alpha/Numeric	Left	space	Type of procedure performed on the patient	M
1475	[Procedure Location Indicator] for [Procedure] (055)	1	Alpha/Numeric	Left	space	The hospital where the procedure was performed	C
1476-1482	[Procedure] (056)	7	Alpha/Numeric	Left	space	Type of procedure performed on the patient	M
1483	[Procedure Location Indicator] for [Procedure] (056)	1	Alpha/Numeric	Left	space	The hospital where the procedure was performed	C

OFFICIAL

1484-1490	[Procedure] (057)	7	Alpha/Numeric	Left	space	Type of procedure performed on the patient	M
1491	[Procedure Location Indicator] for [Procedure] (057)	1	Alpha/Numeric	Left	space	The hospital where the procedure was performed	C
1492-1498	[Procedure] (058)	7	Alpha/Numeric	Left	space	Type of procedure performed on the patient	M
1499	[Procedure Location Indicator] for [Procedure] (058)	1	Alpha/Numeric	Left	space	The hospital where the procedure was performed	C
1500-1506	[Procedure] (059)	7	Alpha/Numeric	Left	space	Type of procedure performed on the patient	M
1507	[Procedure Location Indicator] for [Procedure] (059)	1	Alpha/Numeric	Left	space	The hospital where the procedure was performed	C
1508-1514	[Procedure] (060)	7	Alpha/Numeric	Left	space	Type of procedure performed on the patient	M
1515	[Procedure Location Indicator] for [Procedure] (060)	1	Alpha/Numeric	Left	space	The hospital where the procedure was performed	C
1516-1522	[Procedure] (061)	7	Alpha/Numeric	Left	space	Type of procedure performed on the patient	M
1523	[Procedure Location Indicator] for [Procedure] (061)	1	Alpha/Numeric	Left	space	The hospital where the procedure was performed	C
1524-1530	[Procedure] (062)	7	Alpha/Numeric	Left	space	Type of procedure performed on the patient	M
1531	[Procedure Location Indicator] for [Procedure] (062)	1	Alpha/Numeric	Left	space	The hospital where the procedure was performed	C
1532-1538	[Procedure] (063)	7	Alpha/Numeric	Left	space	Type of procedure performed on the patient	O
1539	[Procedure Location Indicator] for [Procedure] (063)	1	Alpha/Numeric	Left	space	The hospital where the procedure was performed	C
1540-1546	[Procedure] (064)	7	Alpha/Numeric	Left	space	Type of procedure performed on the patient	M

OFFICIAL

1547	[Procedure Location Indicator] for [Procedure] (064)	1	Alpha/Numeric	Left	space	The hospital where the procedure was performed	C
1548-1554	[Procedure] (065)	7	Alpha/Numeric	Left	space	Type of procedure performed on the patient	M
1555	[Procedure Location Indicator] for [Procedure] (065)	1	Alpha/Numeric	Left	space	The hospital where the procedure was performed	C
1556-1562	[Procedure] (066)	7	Alpha/Numeric	Left	space	Type of procedure performed on the patient	M
1563	[Procedure Location Indicator] for [Procedure] (066)	1	Alpha/Numeric	Left	space	The hospital where the procedure was performed	C
1564-1570	[Procedure] (067)	7	Alpha/Numeric	Left	space	Type of procedure performed on the patient	M
1571	[Procedure Location Indicator] for [Procedure] (067)	1	Alpha/Numeric	Left	space	The hospital where the procedure was performed	C
1572-1578	[Procedure] (068)	7	Alpha/Numeric	Left	space	Type of procedure performed on the patient	M
1579	[Procedure Location Indicator] for [Procedure] (068)	1	Alpha/Numeric	Left	space	The hospital where the procedure was performed	C
1580-1586	[Procedure] (069)	7	Alpha/Numeric	Left	space	Type of procedure performed on the patient	M
1587	[Procedure Location Indicator] for [Procedure] (069)	1	Alpha/Numeric	Left	space	The hospital where the procedure was performed	C
1588-1594	[Procedure] (070)	7	Alpha/Numeric	Left	space	Type of procedure performed on the patient	M
1595	[Procedure Location Indicator] for [Procedure] (070)	1	Alpha/Numeric	Left	space	The hospital where the procedure was performed	C
1596-1602	[Procedure] (071)	7	Alpha/Numeric	Left	space	Type of procedure performed on the patient	M
1603	[Procedure Location Indicator] for [Procedure] (071)	1	Alpha/Numeric	Left	space	The hospital where the procedure was performed	C

OFFICIAL

1604-1610	[Procedure] (072)	7	Alpha/Numeric	Left	space	Type of procedure performed on the patient	M
1611	[Procedure Location Indicator] for [Procedure] (072)	1	Alpha/Numeric	Left	space	The hospital where the procedure was performed	C
1612-1618	[Procedure] (073)	7	Alpha/Numeric	Left	space	Type of procedure performed on the patient	M
1619	[Procedure Location Indicator] for [Procedure] (073)	1	Alpha/Numeric	Left	space	The hospital where the procedure was performed	C
1620-1626	[Procedure] (074)	7	Alpha/Numeric	Left	space	Type of procedure performed on the patient	M
1627	[Procedure Location Indicator] for [Procedure] (074)	1	Alpha/Numeric	Left	space	The hospital where the procedure was performed	C
1628-1634	[Procedure] (075)	7	Alpha/Numeric	Left	space	Type of procedure performed on the patient	M
1635	[Procedure Location Indicator] for [Procedure] (075)	1	Alpha/Numeric	Left	space	The hospital where the procedure was performed	C
1636-1642	[Procedure] (076)	7	Alpha/Numeric	Left	space	Type of procedure performed on the patient	M
1643	[Procedure Location Indicator] for [Procedure] (076)	1	Alpha/Numeric	Left	space	The hospital where the procedure was performed	C
1644-1650	[Procedure] (077)	7	Alpha/Numeric	Left	space	Type of procedure performed on the patient	M
1651	[Procedure Location Indicator] for [Procedure] (077)	1	Alpha/Numeric	Left	space	The hospital where the procedure was performed	C
1652-1658	[Procedure] (078)	7	Alpha/Numeric	Left	space	Type of procedure performed on the patient	M
1659	[Procedure Location Indicator] for [Procedure] (078)	1	Alpha/Numeric	Left	space	The hospital where the procedure was performed	C
1660-1666	[Procedure] (079)	7	Alpha/Numeric	Left	space	Type of procedure performed on the patient	M

OFFICIAL

1667	[Procedure Location Indicator] for [Procedure] (079)	1	Alpha/Numeric	Left	space	The hospital where the procedure was performed	C
1668-1674	[Procedure] (080)	7	Alpha/Numeric	Left	space	Type of procedure performed on the patient	M
1675	[Procedure Location Indicator] for [Procedure] (080)	1	Alpha/Numeric	Left	space	The hospital where the procedure was performed	C
1676-1682	[Procedure] (081)	7	Alpha/Numeric	Left	space	Type of procedure performed on the patient	M
1683	[Procedure Location Indicator] for [Procedure] (081)	1	Alpha/Numeric	Left	space	The hospital where the procedure was performed	C
1684-1690	[Procedure] (082)	7	Alpha/Numeric	Left	space	Type of procedure performed on the patient	M
1691	[Procedure Location Indicator] for [Procedure] (082)	1	Alpha/Numeric	Left	space	The hospital where the procedure was performed	C
1692-1698	[Procedure] (083)	7	Alpha/Numeric	Left	space	Type of procedure performed on the patient	M
1699	[Procedure Location Indicator] for [Procedure] (083)	1	Alpha/Numeric	Left	space	The hospital where the procedure was performed	C
1700-1706	[Procedure] (084)	7	Alpha/Numeric	Left	space	Type of procedure performed on the patient	M
1707	[Procedure Location Indicator] for [Procedure] (084)	1	Alpha/Numeric	Left	space	The hospital where the procedure was performed	C
1708-1714	[Procedure] (085)	7	Alpha/Numeric	Left	space	Type of procedure performed on the patient	M
1715	[Procedure Location Indicator] for [Procedure] (085)	1	Alpha/Numeric	Left	space	The hospital where the procedure was performed	C
1716-1722	[Procedure] (086)	7	Alpha/Numeric	Left	space	Type of procedure performed on the patient	M
1723	[Procedure Location Indicator] for [Procedure] (086)	1	Alpha/Numeric	Left	space	The hospital where the procedure was performed	C

OFFICIAL

1724-1730	[Procedure] (087)	7	Alpha/Numeric	Left	space	Type of procedure performed on the patient	M
1731	[Procedure Location Indicator] for [Procedure] (087)	1	Alpha/Numeric	Left	space	The hospital where the procedure was performed	C
1732-1738	[Procedure] (088)	7	Alpha/Numeric	Left	space	Type of procedure performed on the patient	M
1739	[Procedure Location Indicator] for [Procedure] (088)	1	Alpha/Numeric	Left	space	The hospital where the procedure was performed	C
1740-1746	[Procedure] (089)	7	Alpha/Numeric	Left	space	Type of procedure performed on the patient	M
1747	[Procedure Location Indicator] for [Procedure] (089)	1	Alpha/Numeric	Left	space	The hospital where the procedure was performed	C
1748-1754	[Procedure] (090)	7	Alpha/Numeric	Left	space	Type of procedure performed on the patient	M
1755	[Procedure Location Indicator] for [Procedure] (090)	1	Alpha/Numeric	Left	space	The hospital where the procedure was performed	C
1756-1762	[Procedure] (091)	7	Alpha/Numeric	Left	space	Type of procedure performed on the patient	M
1763	[Procedure Location Indicator] for [Procedure] (091)	1	Alpha/Numeric	Left	space	The hospital where the procedure was performed	C
1764-1770	[Procedure] (092)	7	Alpha/Numeric	Left	space	Type of procedure performed on the patient	M
1771	[Procedure Location Indicator] for [Procedure] (092)	1	Alpha/Numeric	Left	space	The hospital where the procedure was performed	C
1772-1778	[Procedure] (093)	7	Alpha/Numeric	Left	space	Type of procedure performed on the patient	M
1779	[Procedure Location Indicator] for [Procedure] (093)	1	Alpha/Numeric	Left	space	The hospital where the procedure was performed	C
1780-1786	[Procedure] (094)	7	Alpha/Numeric	Left	space	Type of procedure performed on the patient	M

OFFICIAL

1787	[Procedure Location Indicator] for [Procedure] (094)	1	Alpha/Numeric	Left	space	The hospital where the procedure was performed	C
1788-1794	[Procedure] (095)	7	Alpha/Numeric	Left	space	Type of procedure performed on the patient	M
1795	[Procedure Location Indicator] for [Procedure] (095)	1	Alpha/Numeric	Left	space	The hospital where the procedure was performed	C
1796-1802	[Procedure] (096)	7	Alpha/Numeric	Left	space	Type of procedure performed on the patient	M
1803	[Procedure Location Indicator] for [Procedure] (096)	1	Alpha/Numeric	Left	space	The hospital where the procedure was performed	C
1804-1810	[Procedure] (097)	7	Alpha/Numeric	Left	space	Type of procedure performed on the patient	M
1811	[Procedure Location Indicator] for [Procedure] (097)	1	Alpha/Numeric	Left	space	The hospital where the procedure was performed	C
1812-1818	[Procedure] (098)	7	Alpha/Numeric	Left	space	Type of procedure performed on the patient	M
1819	[Procedure Location Indicator] for [Procedure] (098)	1	Alpha/Numeric	Left	space	The hospital where the procedure was performed	C
1820-1826	[Procedure] (099)	7	Alpha/Numeric	Left	space	Type of procedure performed on the patient	M
1827	[Procedure Location Indicator] for [Procedure] (099)	1	Alpha/Numeric	Left	space	The hospital where the procedure was performed	C
1828-1877	[Suburb / Locality]	50	Alpha	Left	space	The suburb / locality of the patient's home address	M
1878-1882	[Hours On Mechanical Ventilation]	5	Numeric	Right	zero	The total number of hours an admitted patient has spent on continuous mechanical ventilation during an episode of care in a hospital, rounded to the nearest hour	C
1883	Gender	1	String	Right	space	Gender of a person	O
1884-1899	Individual Healthcare Identifier (IHI)	16	Numeric	Right	space	The numerical identifier that uniquely identifies each individual in the Australian healthcare system.	O

OFFICIAL

1900	<i>IHI Record Status</i>	1	<i>Numeric</i>	<i>Right</i>	<i>space</i>	The standing or position of a record for an Individual Healthcare Identifier (IHI)	O
1901	<i>IHI Number Status</i>	1	<i>Numeric</i>	<i>Rights</i>	<i>space</i>	An identifier to describe the status of the Individual Healthcare Identifier (IHI) number	O
1902	<i>EMR Service Id</i>	16	<i>Numeric</i>	<i>Right</i>	<i>space</i>	Client Visit GUID from Sunrise EMR.	O



OFFICIAL

Correction File

Files must be submitted in the 1917 fixed length format.

Character Position	Fieldname	Length	Type	Justification	Fill
1	[Record Type]	1	Numeric	Left	5
2-5	[Hospital Number]	4	Numeric	Right	zeros
6-15	[Patient Unit Reference Number]	10	Numeric	Right	zeros
16-23	[Separation Date]	8	Numeric	Right	zeros
24-27	[Separation Time]	4	Numeric	Right	zeros
28	Delete indicator	1	Numeric	Left	zeros
29-33	Item number	5	Alpha/Numeric	Left	spaces
34-98	New Information	65	Alpha/Numeric	Left	spaces
99-1917	Filler	1803	Alpha/Numeric	Left	spaces

Control Log

INTEGRATED SOUTH AUSTRALIAN ACTIVITY COLLECTION (ISAAC)

1917 FORMAT CONTROL LOG FOR DISPATCH/RECEIPT OF ELECTRONIC DATA SUBMISSION

**** Failure to submit this completed form with your electronic file will result in a rejected submission ****

CONTACT PERSON						DATE (DD/MM/YYYY)				
No. of files submitted		EMAIL		PHONE						
Order of files to be processed on ISAAC	Hospital Code	Hospital Name	File Naming		Comments	Separations for		Number of records	Record length * 746, 755, 1827, 1877 or 1882	ICD-10-AM Code Version *
			Name	Extension		Month	Year			
<i>Example</i>	0033	Noarlunga	DQC_2164_2a	.txt		Jul	2022	3860	1917	12th
1st										
2nd										
3rd										
4th										
5th										
6th										

*Record Length: RECORD FORMAT – 1917 (for separations from July 2023)
 RECORD FORMAT – 1882 (for separations from July 2021)
 RECORD FORMAT – 1877 (for separations from July 2020)
 RECORD FORMAT – 1827 (for separations from July 2019)
 RECORD FORMAT – 755 (for separations from July 2017 – June 2019)
 RECORD FORMAT – 746 (for approved hospitals)

*Coding Version: A file must contain only a SINGLE coding version, ie ICD-10-AM 12th Ed

E-mail

DATA OPERATIONS CENTRE USE ONLY:

Date Received			

ENQUIRIES TO:

Data Governance & Quality Assurance
 (08) 8226 7355
isaacsubmissions@sa.gov.au

Figure 1: Admitted Patient Care - Control Log

SUPPLY OF SUBMISSION FILES

Submission and Correction files, together with associated Control Logs are submitted to the Data Governance and Quality Assurance unit for processing into the Admitted Patient Care data domain.

Data Submission Schedule

Refer **EDI Data Requirements Bulletin** document for file submission schedule.

Send the files in an e-mail to: Health.ISAACSubmissions@sa.gov.au

*DGQA email listed currently is incorrect for file submissions.

DOCUMENT CONTROL INFORMATION

Title:	Admitted Patient Care: File Extract: Technical Specification 2022-2023
Description:	This document describes the extract files used to populate the Admitted Patient Care data set.
Version	1.0
Version Date	22 June 2023
Document Owner:	Anthony Fantasia Manager, Data Governance and Quality Assurance
Contributors:	Mark Hall, Senior Quality Assurance Officer
Document Location:	Objective
Objective ID	A5010244
Document Classification	For Official Use Only-I1-A1

For more information

Data Governance & Quality Assurance
Enterprise Data & Information
Level 6 11 Hindmarsh Square
Adelaide SA 5000
Contact: [EDI Service Desk](#)
Or email EnterpriseDataandInformation@sa.gov.au
www.sahealth.sa.gov.au

For Official Use Only-I1-A1



www.ausgoal.gov.au/creative-commons