

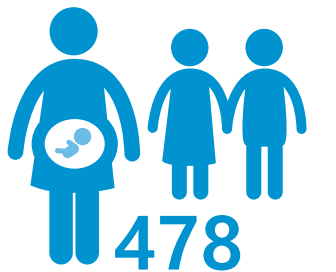
Outcomes

The Port Pirie Blood Lead Level results for the first half of 2021 (1 January - 30 June) provides invaluable information about the current blood lead levels of the community members who participate in the voluntary program. Data published for this outcome infographic is in comparison to this time last year.

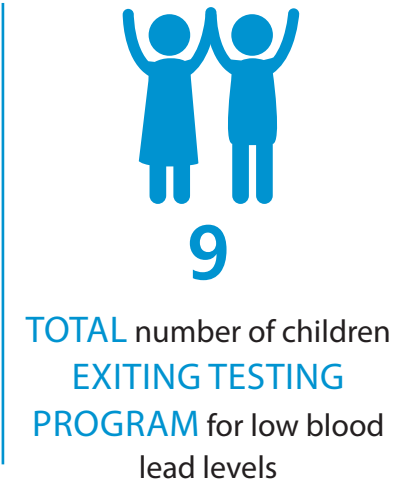
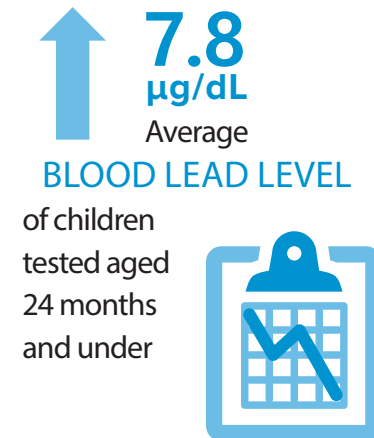
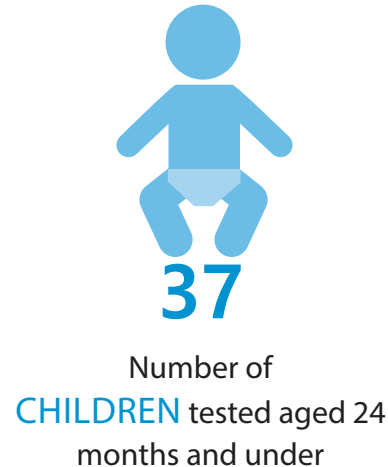
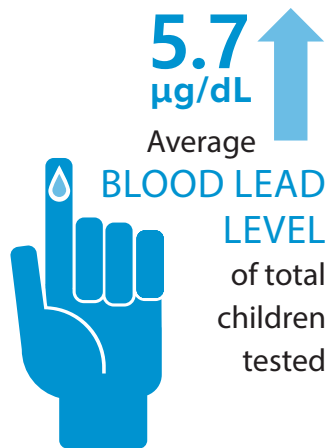
668
BLOOD
lead tests

have been undertaken by the Environmental Health Centre in the first half of 2021, with 478 of these tests on participants within it's target group of pregnant women, babies and children aged under 5 years.

Blood lead levels are measured in $\mu\text{g}/\text{dL}$ - this unit is called micrograms per decilitre*



Total number of PREGNANT WOMEN, BABIES AND CHILDREN aged under 5 years tested.



The Family Health & Development Team continue to support families across Port Pirie and work with over 619 children and pregnant women within the target group

Blood Monitoring Unit Performed these tests within the Environmental Health Centre, In-Home testing and Community Clinics

The Community & Family Development Team have continually engaged with over 164 kindergarten and 235 child care children, delivering education sessions in these settings

*Australia's National Health Medical Research Council (NHMRC) advises if a person has a blood lead level greater than $5 \mu\text{g}/\text{dL}$ the source of the exposure should be investigated and reduced, particularly if the person is a child or pregnant woman. The Environmental Health Centre aims for blood lead levels as low as possible.

FIND OUT MORE BY VISITING: www.sahealth.sa.gov.au/ehc