

Welcome to the second edition of our GP newsletter for 2024! Thanks to all GPs and Practice Managers who subscribed last year and for all your feedback so far. If you are yet to subscribe, please [sign up here](#).

### MEMO FROM NALHN OUTPATIENTS

Dear GP Colleagues,

We are writing to inform you about some changes to process that will reduce delays for your patients when you send a referral to Outpatients at the Lyell McEwin Hospital and Modbury Hospital.

The outpatient team at both hospitals continue to work tirelessly to improve services. We hope this letter allows you, as key partners, to understand our processes.

When a referral arrives in the hospital, it needs to be entered into the Electronic Medical Record system, triaged, and returned to the outpatients department. This must all occur prior to a letter being sent to you and the patient, to confirm that the referral has been received and the patient is on the waitlist. This process can take six to eight weeks.

For this reason we would ask: **If the referral is urgent, please mark it clearly on the top of the referral - for example: URGENT - CONFIRMED CANCER**

This will allow staff in the outpatients area to get the referral reviewed urgently.

**Urgent referrals accompanied by a phone call to the relevant treating team at the hospital are highly appreciated.**

If a patient is being referred for a **non-urgent or semi-urgent** reason, please ask the patient to **wait 2 months prior to contacting the hospital** about the referral.

Unless there is a change in clinical information or an update to the original referral, please **refrain from sending the same referral more than once in a 3-month period**.

Assistance with referral information, whether a referral will be assessed as urgent, semi-urgent or non-urgent, and clinical details to include to allow accurate triage by our clinicians can all be found here:

[Clinical Prioritisation Criteria | SA Health](#)

The more information your referral contains, the easier it is for the clinicians to triage quickly. We thank our GP community who already send us detailed referrals and appreciate the time that this takes.

Outpatient waiting times are published here for all public hospitals across SA health:  
[Specialist Outpatient Waiting Time Report | SA Health](#)

We welcome all feedback and if you have any questions or concerns, please feel free to contact the NALHN GP Integration Unit.

Kind regards

**NALHN Outpatient Team and the GP Integration Unit.**

### EXCITING NEWS! NALHN IS PLEASED TO ANNOUNCE THAT IT NOW HAS A DERMATOLOGY DEPARTMENT!

This new service will be led by Associate Professor Aaron Boyce, who will soon be joined by a team of visiting Consultant Dermatologists in providing dermatology services to residents of the NALHN catchment area.



AProf Boyce is originally from Adelaide's northern suburbs, having grown up in Paralowie before leaving to pursue his medical training. He's now come home after more than 15 years working in various Dermatology centres across Australia and overseas and is excited about being able to help care for the local community. Aaron and the rest of the consultant team (who'll be announced shortly) will be supported by Dr Thomas Mathew, who is a GP, working as an unaccredited registrar.

The service is now accepting referrals for both adult and paediatric patients, with a scope of practice that will be aligned with the state's other hospital dermatology services. AProf Boyce has explained that the service is now accepting referrals:

"GPs are welcome to start referring patients to our clinics. We will be able to manage everything here, so whether it is a young person with acne, or an older patient with more complicated skin disease, we have a team of experienced dermatologists who'll be able to help", he said.

As with other hospital-based services, the NALHN dermatology team will not be able to provide skin cancer screening or surveillance. Cosmetic procedures are also out of scope.

Dermatology services are currently available at the Lyell McEwin Hospital, however, there is a plan to expand the service to Modbury Hospital within the next 3 months. Referrals can be sent via the standard pathways to LMH. In addition, for telephone advice during office hours, please ring the Lyell McEwin Hospital Dermatology Registrar via the switchboard.

### DISCHARGE SUMMARY PROJECT WITH NALHN

We currently are embarking on a project into the use of **Artificial Intelligence (AI) to produce highly accurate and timely discharge summaries** to general practice. We hope this will, over time, allow for better summaries that arrive far quicker (on the day of discharge) and could potentially be individualised for their audience.



**We are seeking interest from GPs who would be happy to score discharge summaries based on 4 sets of criteria.** Discharge summaries would be either those you have already received for a patient or may potentially include patients who are seen by other doctors at your practice.

Each discharge summary would only take a few minutes to score, and the data will inform the detail and content of the summaries that the AI model will produce in the future. Our ultimate goal is to make your lives easier by producing concise relevant summaries as fast as possible.

**Being involved in this research will gain CPD points in the measuring outcomes section of CPD for 2024.** Points allocated will depend on the number of summaries reviewed and scored. Any amount of discharge summaries you would be able to review at this stage would be beneficial to the project.

If you agree to assist us in this project, we will email you a link that will allow you to download the discharge summary and complete the required survey.

If you are interested in participating, please contact: [Health.NALHNGPIntegrationUnit@sa.gov.au](mailto:Health.NALHNGPIntegrationUnit@sa.gov.au)

### REQUESTS FOR ACCESS TO MEDICAL RECORDS

The Medical Records Department have been updating the processes in relation to receipt and sending of requests for access to medical records. There is a new email address for access to medical records.

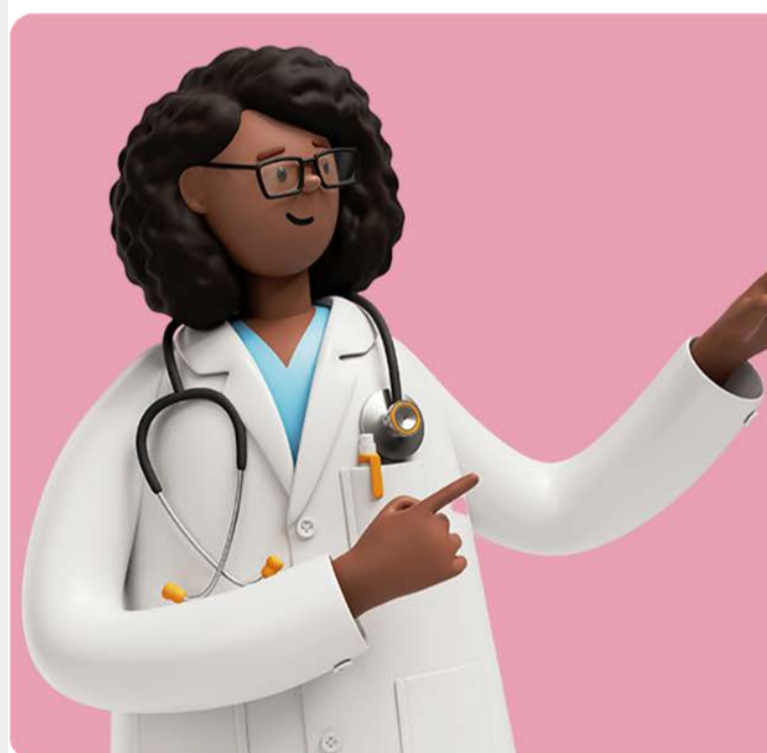


For access to discharge summaries and other patient information (excluding all legal requests) please include the signed Release of Information Form and send to:

**Lyell McEwin Hospital:**  
[Health.LMHMedicalRecordDepartment@sa.gov.au](mailto:Health.LMHMedicalRecordDepartment@sa.gov.au)

**Modbury Hospital:**  
[Health.NALHNMHRDDepartment@sa.gov.au](mailto:Health.NALHNMHRDDepartment@sa.gov.au)

### GP PSYCHIATRY SUPPORT LINE



**FREE CALL: 1800 16 17 18**  
**AN ADVICE LINE, EXCLUSIVE TO GPs**

GPs can now speak directly with psychiatrists to receive expert advice regarding the mental health needs of your patients.

GPs may call to discuss:

- Medication Advice
- Diagnostic Clarification
- Risk & Safety
- Management Planning
- General Professional Counsel

[Home - GP Psychiatry Support Line \(gpsupport.org.au\)](http://gpsupport.org.au)

### PEPA PLACEMENTS

Are you a doctor who cares for people experiencing a life-limiting illness? Would you like to develop your skills, knowledge, and confidence in the palliative approach to care in your day-to-day practice? Consider undertaking a FREE PEPA supervised clinical placement in a specialised palliative care service.

Find out more about [PEPA supervised clinical placement opportunities](#).

### MENTAL HEALTH ECHO – SERIES 2

**Extension for Community Healthcare Outcomes (ECHO)**

Open to healthcare professionals across all disciplines. A shared learning and professional support community for healthcare professionals working with people living with a mental illness. This program will focus on management of mental illness in the context of the national Equally Well action to improve the mental and physical health of people living with mental illness. The online ECHO meetings connect healthcare professionals with our panel of experts to share and learn from each other through education and real-life case discussions. Enrolment is FREE.



Monthly on Wednesdays | 6:30 – 7:45 pm via Zoom

- June 5 – Tobacco cessation in mental health population
- July 3 - Mental Health and Physical Health, things we don't often think about

**Info and to enrol - [www.sapmea.asn.au/echo/mh2](http://www.sapmea.asn.au/echo/mh2)**

**Enquiries to - [echo@sapmea.asn.au](mailto:echo@sapmea.asn.au)**

### FLINDERS UNIVERSITY QUALITATIVE STUDY – GPs WORKING IN RESIDENTIAL CARE

Are you a GP working in private practice and providing services to residential aged care homes in South Australia? If so, you are invited to participate in a research study exploring what factors influence the low uptake of some government subsidised MBS and selected specialist services by older people in residential aged care. This is part of a larger primary health care study being undertaken by the Registry of Senior Australians (ROSA), based at SAHMRI. If you are interested in participating via a short online interview, Flinders University would love to hear from you.

Please contact Carmel McNamara, Senior Translational Project Officer, Flinders University for further information at [carmel.mcnamara@flinders.edu.au](mailto:carmel.mcnamara@flinders.edu.au)



### BPD Co LIVED EXPERIENCE & CARER PROGRAM

Feel free to share with people who may be interested in the below programs for people with lived experience of borderline personality disorder (BPD) and for family or professional supporting them. Refer to the SA Health website for [clinical/professional training options](#). This includes multiple resources and training options, including single sessions and peer groups.

### NALHN GPIU WEBSITE

Did you know there is a dedicated page on NALHN's website - [sahealth.sa.gov.au/nalhnGPIU](http://sahealth.sa.gov.au/nalhnGPIU) - with information for our local GPs?



We are currently in the process of updating content and making improvements, so if you have any suggestions on what information you would like to see on the website, please just send us an [email](#).

Northern GP News will be sent approx. every three months and is for GP's and practice staff working in the NALHN region.

If this newsletter has been forwarded and you would like to subscribe, please follow this link <https://forms.office.com/r/ADe6xhLhzh>

If you would like to unsubscribe, please [email us](#) with the subject 'unsubscribe'.

Supported by



An Australian Government Initiative

What did you think of this newsletter?  
(double click on the stars to rate)

